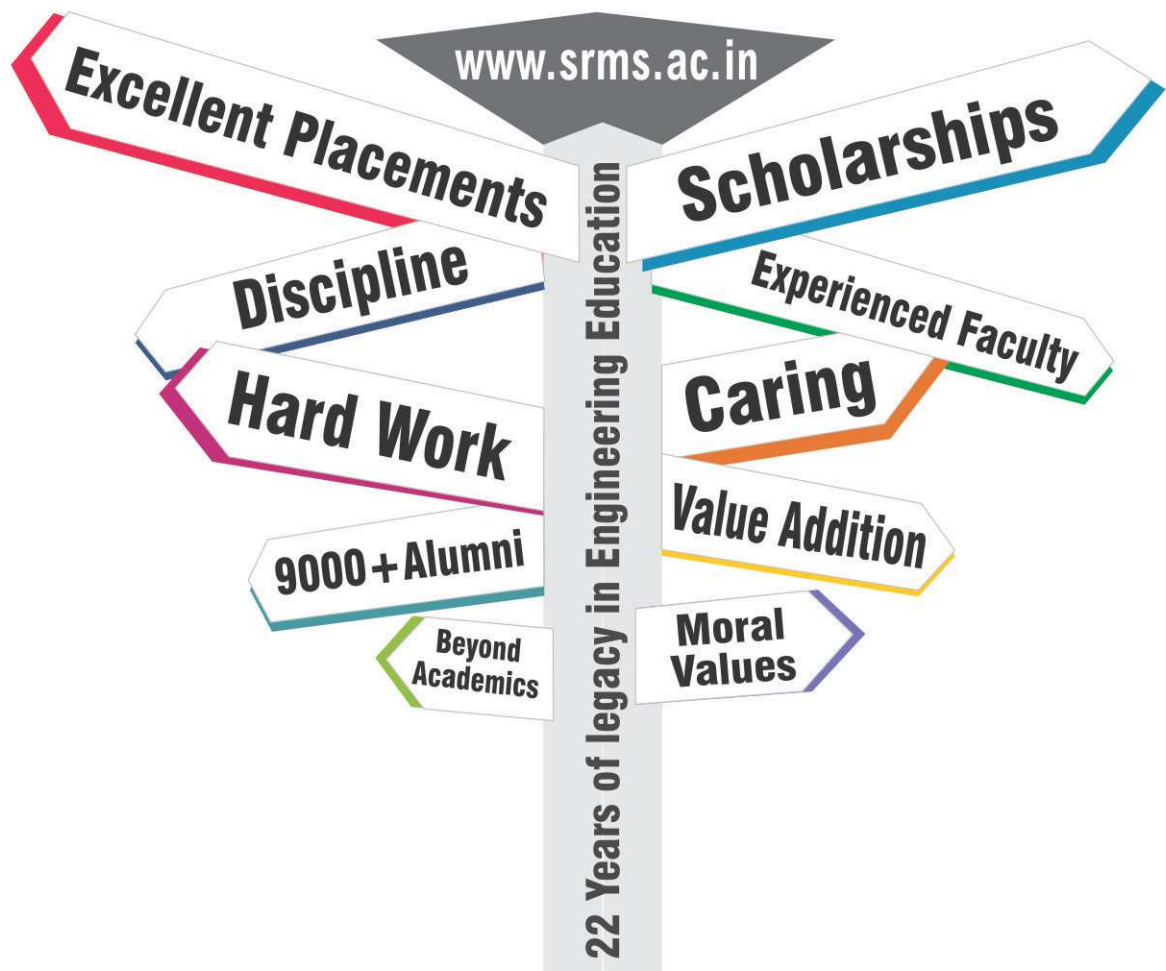


# PROSPECTUS



**SRMS**

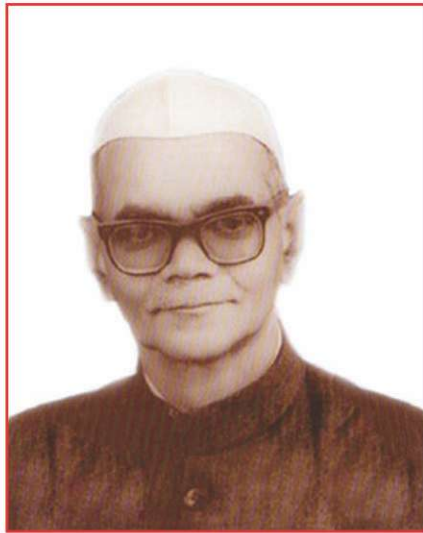
## Igniting Cognition



**Shri Ram Murti Smarak  
College of Engg. & Tech.  
Bareilly Campus**

**Shri Ram Murti Smarak  
College of Engg., Tech. & Research  
Bareilly Campus**

**Shri Ram Murti Smarak  
College of Engg. & Tech.  
Lucknow Campus**



Late Shri Ram Murti Ji

The SRMS Trust was established in the memory of Late Shri Ram Murti Ji, veteran freedom fighter, a true Gandhian, Ex-Parliamentarian and Ex-Minister, U.P. Govt.

He visited several countries including USA, Japan, England and Taiwan on Agricultural missions and contributed largely towards promotion of Green Revolution in India.

Ram Murti Ji declined to accept the pension offered to the freedom fighters, since he was of the conviction that whatever he did for the motherland was out of patriotism and not for material gains. In pursuance of the same patriotic spirit he also donated 30 acres of agricultural land in the Bhoodan Movement.



कांक्षन्तः कर्मणां सिद्धिम् यजन्त अिह देवताः ।  
क्षिप्रं हि मानुषे लोके सिद्धिर्भवति कर्मजा ॥

## *Vision*

- ✘ To help build India as a world leader in Technical Education
- ✘ To establish and develop world class Institutions for overall growth in an era of globalisation
- ✘ To facilitate easy access to technical education to all sections of society
- ✘ To develop and provide a professionally qualified technical workforce for augmenting the nation's human resources

## *Mission*

- ✘ To impart academic excellence in Technical Education.
- ✘ To inculcate high Moral, Ethical and Professional standards among our students and to improve overall personality.
- ✘ To evolve the Institution to the status of a Deemed University.
- ✘ To strive incessantly to achieve the goals of the Institution.
- ✘ Our assets - Our Students.
- ✘ Our means - Our College Staff.

## *Values*

- ✘ Integrity
- ✘ Excellence
- ✘ Fairness
- ✘ Innovativeness

## *Quality Policy*

- ✘ To make the college a centre of excellence in technical and professional education.
- ✘ To carry-out research, consultancy and training for meeting the needs of society at large.
- ✘ To plan, act and check with high degree of social sensitivity through defined procedure.





# Contents

|  | Page No. |
|--|----------|
| ➤ Chairman's Message                   | 1        |
| ➤ About The SRMS Trust                 | 2        |
| ➤ Objectives of SRMS                   | 3        |
| ➤ About the College                    | 4        |
| Programme - Engineering                |          |
| ➤ B. Tech (Bachelor of Technology)     | 8        |
| ➤ M. Tech (Master of Technology)       | 20       |
| Programme - Pharmacy                   |          |
| ➤ B. Pharm (Bachelor of Pharmacy)      | 24       |
| ➤ M. Pharm (Master of Pharmacy)        | 30       |
| Programme - Management                 |          |
| ➤ MBA (Master of Business Application) | 32       |
| Programme - Computer Application       |          |
| ➤ MCA (Master of Computer Application) | 40       |
| ➤ Faculty                              | 45       |
| ➤ Pedagogy                             | 50       |
| ➤ Value Addition Programme             | 52       |
| ➤ Industry - Institute Interaction     | 55       |
| ➤ Accessorial Infrastructure           | 59       |
| ➤ Student's Activities                 | 65       |
| ➤ Departmental Club & Publication      | 69       |
| ➤ Memberships & Initiatives            | 70       |
| ➤ Important Instructions               | 71       |
| ➤ SRMS Trust - At a Glance             | 73       |
| ➤ Guidelines for SRMS - EET            | 79       |
| ➤ Application Form                     |          |

## Ragging is punishable offence under Law

As per the orders of Hon'ble Supreme Court, AICTE, PCI, State Government and Dr. A.P.J. Abdul Kalam Technical University ragging is illegal and is completely prohibited and banned both inside and outside the college campus. Any student caught or informed by victim student or his parents/guardians, an F.I.R. will be lodged against the student involved in ragging.

As per Hon'ble Supreme Court of India's Order

**"If any incident of ragging comes to the notice of the authority, the concerned student shall be given liberty to explain and if his/her explanation is not found satisfactory, the authority would expel him/her from the institution."**





## Chairman's Message

Your decision to structure your career in Engg. / Pharmacy / Computer Application / Management at SRMS Institutions is highly commendable and I, on behalf of SRMS Trust family extend a very warm welcome to you all. We have already spelt down our Vision, Mission and Values and sincere efforts are made to utilize the infrastructure facilities and intellectual capital to achieve these goals and values. Students at SRMS Institutions are always motivated to participate and indulge in technical, cultural and sports activities along with academic pursuits just to make them stay abreast with global image of a complete human being.

We are conscious of the very changing needs of the society and therefore we impart education and train the students beyond the prescribed syllabus to make them more than Engineers/Managers/Technocrats. It is matter of pride to convey that our students have won laurels at national and international levels in paper presentation and in getting final placements too.

I wish to congratulate you for selecting and seeking a place as a student in these Trust Institutions. We have provided adequate infrastructural facilities for your learning and training so that you are not only properly trained but also well-prepared to shoulder the responsibilities as a good citizen of the country.

But accept personal responsibility for your own growth; no one can do it for you. What you do today will determine your tomorrow, Recollect what Swami Vivekanand has opined "You have to grow from the inside out; No one can teach you, no one can make you spiritual. There is no other teacher but your own soul".

'Work and live as a family unit' is the philosophy of SRMS Institutions and I hope that your stay with us will be very comfortable, fruitful and memorable.

— Dev Murti

# Shri Ram Murti Smarak Trust

Bareilly ● Lucknow

SRMS Trust, a public Charitable Trust, established by Shri Dev Murti, Founder and Chairman in the year 1990, is a living tribute to the memory of his loving father, veteran freedom fighter, true Gandhian, Ex-Parliamentarian, Ex-Minister U.P. Govt., Late Shri Ram Murti Ji.

The primary objective of the Trust is to provide and promote education and research in the field of Engineering & Technology, Medicine, Humanities, Science and Management. The aim of SRMS Trust is the upliftment of the masses by :

- ◆ Promoting Social Values through Social Services.
- ◆ Promoting Technical and Professional education.
- ◆ Promoting Health & Medical Education.
- ◆ Offering a number of charitable programmes and charitable services

SRMS Trust is having ten campuses in Bareilly & Lucknow where it runs following Institution :-

1. SRMS College of Engineering & Technology, Bareilly
2. SRMS College of Engineering, Technology & Research, Bareilly
3. SRMS College of Engineering & Technology Lucknow - Kanpur Road
4. SRMS Institute of Medical Sciences, Bareilly
5. SRMS School of Nursing, Bareilly
6. SRMS International Business School Lucknow-Kanpur Road
7. SRMS R. R. Cancer & Research Centre Bareilly
8. SRMS Institute of Paramedical Sciences Bareilly
9. SRMS Functional Imaging Centre, Lucknow
10. SRMS School, Unnao (A Charitable School)

SRMS Trust in last 25 years is continuously striving for promotion & excellence of technical professional education & healthcare. Today it is recognized as one of the premier centre of education & helthcare in the region.

The Trust has been promoting academic competitiveness and excellence, by awarding scholarships (Present amount : ₹ 2 Crore ) among its meritorious students.

The Charitable Services of Hospital:

- ◆ Free Super Specialty and Specialty OPD on all Weekdays for patients
- ◆ 100% free beds for economically weak patients for whom full treatment is borne by the Trust.
- ◆ Free ambulance service to promote institutional deliveries & for trauma management.
- ◆ Free child Immunization programme in association with the government
- ◆ Free Mother and Child Camps.
- ◆ Free Medicine
- ◆ Free Intraocular Cataract Lenses surgeries with support of U.P. Government.
- ◆ Tele-linked free ambulance service for the Trauma victims on all Highways.

**Vocational Training -**

The Trust through its nexus with Engineering and Medical College offers Samudayik Yojna under skill development scheme to empower the socially and economically backward people of the adjoining areas. Young persons having education upto High School or 10+2 are selected for training in certain crafts like Carpentry, Welding, Turning, Wiring, EPBAX-Operation, X-ray Technicians, ECG Technicians and Computer Literacy.

SRMS Samudaik Sewa Yojana, SRMS Janhit Chikitsa Yojana, SRMS Samudayik Swasthya Yojana, Free Pharmacy, Cataract Eradication Programme, Rural Health Camp, Government Health Programme, Community Health Education, Scholarship, Debate & Story Writing, Campus Outreach Program & Ram Murti Pratibha Alankaran are some of the programmes run by the trust.

The SRMS Trust firmly believes that the only way to change the society & uplift their social & economic base is through education.





### Short Term Objectives

- To admit students on the basis of merit.
- To introduce the inter-disciplinary curriculum.
- To increase the knowledge base of the students.
- To produce world class engineers, technocrats and managers.
- To improve quality through proper training to faculty and staff.
- To initiate entrepreneurship development program for students.
- To develop the overall personality and competence of the students.
- To start Vocational Training programmes for the under privileged people of society.

### Long Term Objectives

- To enhance R&D activities.
- To start Ph.D. Programmes.
- To increase Industry-Institution Interaction.
- Fully residential campus for faculty and students.
- To expand M.Tech. Programmes in more disciplines.
- To expand M.Pharm. Programmes in more disciplines.
- To acquire academic autonomy/status of Deemed University.
- To motivate women to come to the main stream in the technical field of the nation.
- Upgrading Information Technology infrastructure of the college from time to time.
- Up-gradation of Laboratories and interaction with international research centres.
- To undertake activities for employment generation for less privileged, tribal and SC/ST section of population.
- Modernization of Library by introducing internet ready reference tables for e-access, e-source sharing with reputed libraries through internet.



# Shri Ram Murti Smarak

## College of Engineering & Technology (Bareilly Campus)

**AKTU**  
**College Code**  
**014**

|             |   |  |
|-------------|---|--|
| Established | : | December 1996  |
| Address     | : | Ram Murti Puram, 13.2 Km. Bareilly-Nainital Road, Bareilly                                   |
| Approval    | : | A.I.C.T.E. (Ministry of HRD, Govt. of India)<br>Pharmacy Council of India                    |
| Affiliation | : | Dr. A.P.J. Abdul Kalam Technical University, Lucknow<br>(Formerly U.P. Technical University) |

Shri Ram Murti Smarak College of Engineering & Technology (SRMSCET) has an independent residential campus spread over 35 acres of land with all weather roads, lush green lawns, playgrounds, Multi-Purpose Hall, Gymnasium, Squash Court and 53020 sq.m. of built up area on the campus. The campus is aesthetically planned and designed with exquisite facilities.

The college offers courses of undergraduate and postgraduate levels, with a professional or vocational orientation to internationally recognized standards of excellence. All courses lay emphasis on practicals and are multi-disciplinary in approach. The college inculcates values, ethics in its students, so that the pride of SRMSCET will become an asset of our Nation.

The College has demonstrated the perennial evidence for merit and quality. It is developing by leaps and bounds in terms of infrastructural facilities and human capital not only to fulfill the requirements of the current technological status but also to set itself as teaching and research centre of eminence in future.

**College has been selected for the Technical Education Quality Improvement Programme of National Project Implementation Unit of the Government of India financed by the World Bank.**

**The College is a STAR Performer College of UPTU & winner of Excellence award in B.Tech., B.Pharm, MBA & MCA in year 2008 and 2009 continuously.**







### Courses Offered :

#### U.G. Courses

1. **B.Tech.**

(Program duration : Four years)

- Computer Science & Engineering (CS)
- Electronics & Communication Engineering (EC)
- Electrical & Electronics Engineering (EN)
- Information Technology (IT)
- Mechanical Engineering (ME)

Annual Intake

120  
120  
120  
60  
60

2. **B.Tech. (2<sup>nd</sup> Year - Lateral Entry)**

(Program duration : Three years)  
(All above branches)

20% of Intake

3. **B.Pharm.**

(Program duration : Four years)

60

4. **B.Pharm. (2<sup>nd</sup> Year - Lateral Entry)**

(Program duration : Three years)

10% of Intake

#### P.G. Courses

1. **MBA**

(Program duration : Two years)

60

2. **MCA**

(Program duration : Three years)

60

3. **MCA (2<sup>nd</sup> Year - Lateral Entry)**

(Program duration : Two years)

20% of Intake

4. **M.Tech.**

- Software Engineering
- CAD/CAM
- Microwave Engineering
- Electrical Drives & Control

15  
15  
18  
18

5. **M.Pharm**

- Pharmaceutics

18



# Shri Ram Murti Smarak

## College of Engineering & Technology (Lucknow Campus)

SRMS Trust has established Shri Ram Murti Smarak College of Engineering & Technology, (SRMSCET, Lucknow Campus) with a huge state of the art campus, equipped with world class facilities at 35 Km. mile stone on Lucknow-Kanpur Highway, Village-Kushahari, Tehsil-Hassanganj, Unnao (UP). The college has an independent residential campus with lush green lawns, all weather roads, playgrounds, hostels, multi-purpose hall, gymnasium, table tennis & lawn tennis court library etc.

SRMSCET, Lucknow has been established to facilitate and expands its quality in Technical Education in a disciplined environment for which SRMS is known for last two decades. The campus is equipped from the very first day with all the infrastructure facilities available in all the institutions established and run by the SRMS Trust.

SRMSCET, Lucknow is offering B.Tech. programme in the various branches.

**AKTU**  
**College Code**  
**745**

Established : 2011  
Address : 35Km. Lucknow-Kanpur Highway, NH-25  
Approval : A.I.C.T.E. (Ministry of HRD, Govt. of India)  
Affiliation : Dr. A.P.J. Abdul Kalam Technical University, Lucknow (Formerly U.P. Technical University)

### Courses offered :

#### 1. B.Tech.

Annual Intake

(Program duration : Four years)

- Computer Science & Engineering (CS) 60
- Electronics & Communication Engineering (EC) 60
- Mechanical Engineering (ME) 60

#### 2. B.Tech. (2<sup>nd</sup> Year - Lateral Entry)

20% of Intake

(Program duration : Three years)

(All above branches)







# Shri Ram Murti Smarak

## College of Engineering Technology & Research (Bareilly Campus)

**AKTU**  
**College Code**  
**450**

Established : 2008  
 Address : Ram Murti Puram, 13.2 Km. Bareilly-Nainital Road, Bareilly  
 Approval : A.I.C.T.E. (Ministry of HRD, Govt. of India)  
 Affiliation : Dr. A.P.J. Abdul Kalam Technical University, Lucknow  
 (Formerly U.P. Technical University)

The Shri Ram Murti Smarak College of Engineering Technology & Research (SRMSCETR) formerly SRMSWCET (exclusively for girls and converted to co-education) is established by the SRMS Trust in an independent residential campus spread over 7.5088 acre of land. It is situated at Bareilly-Nainital Highway at 13 Km. stone in Ram Murti Puram and is about 15 km away from Bareilly junction, and 3 km away from Bhojipura Junction. SRMSCETR, a place of eminent knowledge and noble ideals stands unique on the educational sky of the region. The College under the aegis of SRMS Trust, found itself cradled under the chairmanship of Shri Dev Murti. The College rests in a harmonious and congenial ambience and amalgamates the best of Indian exuberant cultural traditions. Modern scientific learning making it to be the harbinger of educational excellence having an Indian paradigm of living with an international outlook. The College endeavors for an integrated, impressive & all-round development of the students so as to enable them to be a useful functional technocrat of tomorrow. In order to achieve this objective, the college emphasizes on best academics with high degree of interaction with industries.

### Courses offered :

|   |                      |
|---|----------------------|
| <b>1. B.Tech.</b>   | <u>Annual Intake</u> |
| (Program duration : Four years)                           |                      |
| ● Computer Science & Engineering (CS)                     | 120                  |
| ● Electronics & Communication Engineering (EC)            | 120                  |
| <b>2. B.Tech. - (2<sup>nd</sup> Year - Lateral Entry)</b> | 20% of               |
| Intake  |                      |
| (Program duration : Three years)                          |                      |
| (All above branches)                                      |                      |





# Bachelor of Technology

Approved by AICTE, New Delhi and  
Affiliated to Dr. A.P.J.A.K. Technical University, Lucknow  
(Formerly U.P. Technical University)







## Goal of the Programme

*The B.Tech. Programme has been designed taking into view the needs of various industries. The programme is regularly updated to cope with the ever-changing technology and demands of the industry.*

*Our goal is to provide the requisite platform to budding engineers and technocrats to sharpen their reasoning, analytical and communication skills along with requisite technical knowledge so that they can meet with confidence the future challenges of growing technology. Emphasis is laid on enhancing computer and soft skills of students of all branches.*



## Admission Criterion

### Admission Procedure

#### B.Tech - 1<sup>st</sup> Year

Admissions are as per the following :

85% seats of total intake of all branches are allotted according to the merit list of UPSEE / JEE-Mains/AIEEE as per State Government directives through online counseling.

15% seats of total intake & Vacant/Lapsed seats in all branches will be allotted through SRMS EET -2017 wherein the candidates having 60% of aggregate marks in PCM at 10+2 level without any grace marks in any of the subjects are eligible to appear.

#### B.Tech (2<sup>nd</sup> Year Lateral Entry)

Candidates who have passed Diploma of 3 years (with minimum 60% marks) recognised by UP Board of Technical Education in any branch of Engineering/Technology except Agriculture Engg. or B.Sc. (PCM) with 60% marks are eligible for admission to second year. In this case applicant must have appeared in UPSEE.

#### Fee Structure

Fee structure is available on college website. Fee to be paid by Demand Draft drawn in favour of "SRMSCET" payable at Bareilly for SRMCET Bareilly Campus, "SRMSCET" payable at Lucknow for SRMSCET Lucknow campus and "SRMSCETR" payable at Bareilly for SRMSCET&R, Bareilly.







## DURATION

4 Years Full Time

## INTEGRITY OF THE SYSTEM

All admissions are done maintaining transparency at every level.

The admission against management quota will be done through SRMS EET-2017. For details, visit [www.srms.ac.in](http://www.srms.ac.in)

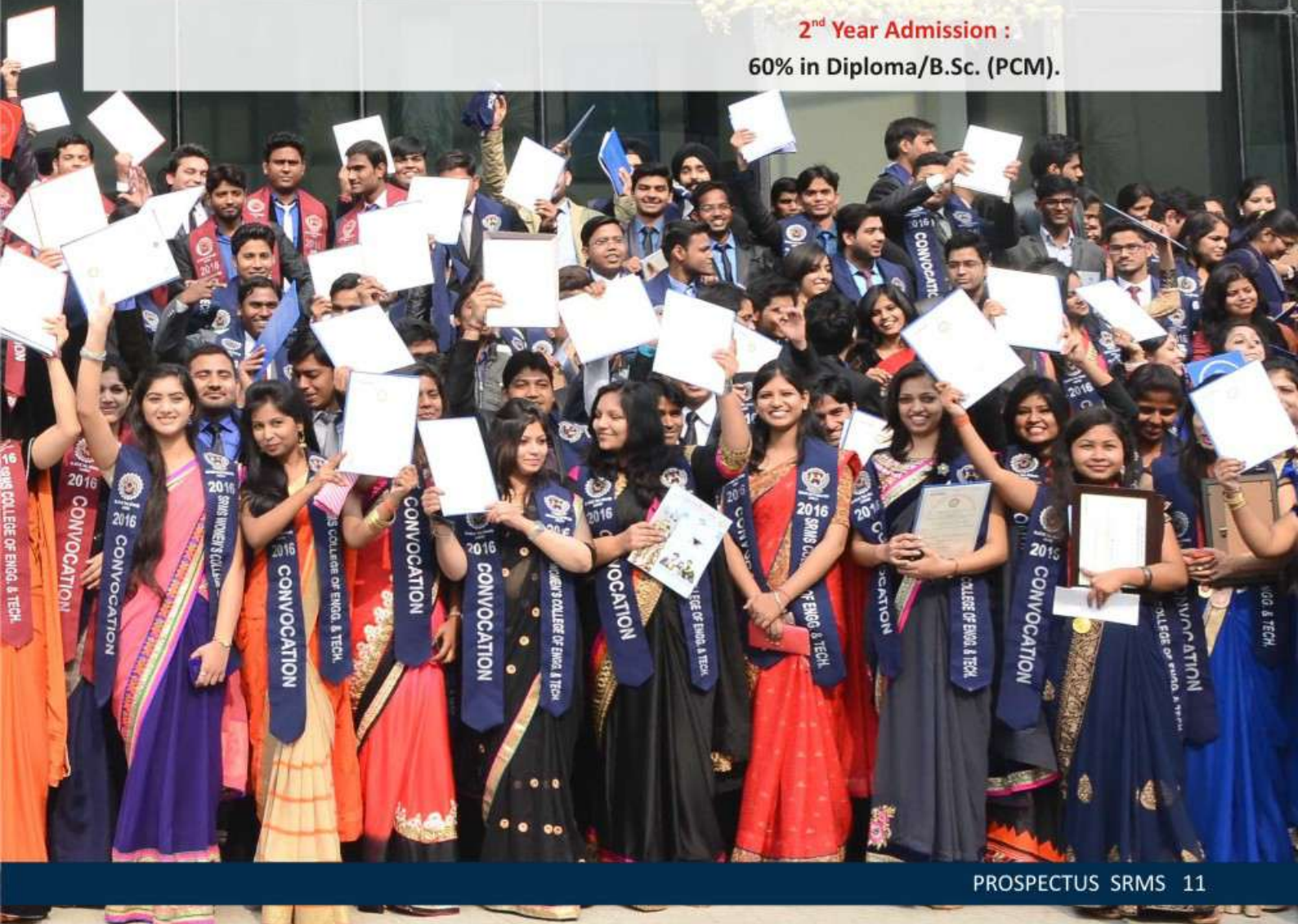
## ELIGIBILITY

### 1<sup>st</sup> Year Admission :

- i Candidate must have passed 10+2 or equivalent (with 60% aggregate marks in P.C.M.) from a recognised board.
- ii Must have a valid rank in UPSEE/JEE-Mains/AIEEE.
- iii Admission under management quota will be made through SRMS EET-2017 wherein the candidates having 60% of aggregate marks in PCM at 10+2 level without any grace marks in any of the subjects are eligible to appear.
- iv Candidates who are appearing in 10+2 examination in 2017 are also eligible for SRMS EET-2017. At the time of admission, candidates must produce the mark sheet of 10+2 or equivalent, satisfying the criteria mentioned in point number (iii).

### 2<sup>nd</sup> Year Admission :

60% in Diploma/B.Sc. (PCM).





## Appreciation & Recognition of Merit

The Trust recognizes all the meritorious students every year on the basis of their annual result of the University. For this the Trust has earmarked **₹ TWO CRORES** to be distributed to the meritorious students of the Trust Institutions every year.

THE COLLEGE HAS LAID DOWN THE FOLLOWING CRITERIA FOR THE SCHOLARSHIP :

- |  |   |  |              |
|--|---|--|--------------|
| 1. Students securing 86% or more marks in Dr. A.P.J.A.K.T.U. Examination               | Rs. Equivalent to the % of marks secured (Minimum Rs. 86,000/-) | 3. Students securing 80% or more but below 85% in Dr. A.P.J.A.K.T.U. Examination | Rs. 30,000/- |
| 2. Students securing 85% or more marks but below 86% in Dr. A.P.J.A.K.T.U. Examination | Rs. 35,000/-  | 4. Students securing 75% or more but below 80% in Dr. A.P.J.A.K.T.U. Examination | Rs. 20,000/- |

Merit must be recognized and duly honoured. This creates a healthy competition among the students, acts as a fountain head of encouragement and becomes a shining example for others to follow. SRMS Trust has been fortunate in receiving excellent support from the Trustees and well-wishers, who have come forward and instituted various medals and other awards to encourage our students.







### MEDALS AND AWARDS

- Shri Ram Murti Gold Medal for the highest scoring final year out-going B.Tech. student of the college.
- Shri Ram Murti Silver Medal for the second highest scoring final year out-going B.Tech. student of the college.
- Shri Ram Murti Bronze Medal for the third highest scoring final year out-going B.Tech. student of the college.
- Prem Prakash Gupta Charitable Foundation Gold Medal for the best B.Tech. all-rounder of the final year batch of the college.
- Er. Subhash Mehra Gold Medal for the highest scorer of B.Tech., Computer Science & Engineering, of the out-going batch.
- Dr. Usha Mehra Gold Medal for highest scorer of B.Tech., Electronics & Communication, of the out-going batch.
- Er. P.N. Gupta Gold Medal for the highest scorer of B.Tech., Electrical and Electronics, of the out-going batch.
- Dr. Asha Gupta Gold Medal for the highest scorer of B.Tech., Information Technology, of the out-going batch.
- Shri Laxmi Bhushan Varshney Gold Medal for the highest scorer of B.Tech., Mechanical Engineering, of the out-going batch.
- A special prize for the outstanding under graduate student every year in overall sports activities.

### CASH PRIZES

- A cash prize of Rs. 51,000/- is awarded to the student securing first position in the passing out batch of B.Tech. subject to the condition that the student has secured more than 80% Marks.
- A cash prize of Rs. 41,000/- is awarded to the student securing second position in the passing out batch of B.Tech. subject to the condition that the student has secured more than 80% Marks.
- A cash prize of Rs. 31,000/- is awarded to the student securing third position in the passing out batch of B.Tech. subject to the condition that the student has secured more than 80% Marks.
- A cash prize of Rs. 21,000/- is awarded to the student securing first position in the respective branch in the out going batch of B.Tech. subject to the condition that the student has secured more than 75% Marks.



## Change of Branch

The branch of study once allocated by the UPSEE shall not be changed; however, such changes may be allowed against vacant seats at the beginning of IInd year, on the basis of merit in the B.Tech. 1st year examination result (without any back and grace marks).

Change of branch may be allowed against the vacant seats in the following two stages:

- A.
- i. In first year branch change should be completed within 10 days of the last date of admission to the B.Tech., 1<sup>st</sup> Semester, strictly on the basis of combined general merit of entrance examination on vacant seat (s).
  - ii. After change of branch, number of students in branch (s) shall neither increase over the intake approved by A.I.C.T.E. nor decrease below 75% of intake approved by A.I.C.T.E.
- B. In the second year (Third semester) Branch Change should be completed according to the following criteria:
- i. Branch change at the college level shall be carried out by the Director / Principal of the college.
  - ii. Facility of Branch Change at the Second Year (Third Semester) level shall be available only to meritorious students and shall not be considered as a matter of right.
  - iii. Branch Change is permitted at the beginning of Third Semester (Second Year) only.
  - iv. For the purpose of branch change, the "prescribed intake" shall be the intake prescribed by AICTE for the previous academic session including 10% intake for fee waiver seats, if applicable, when the students were admitted at first semester level. Subsequent variations in intake shall have no bearing on the students eligible for branch change.
  - v. Maximum number of students permitted to change of branch shall be 25% of the students enrolled in the first year in the respective branch (s), subject to the strength of the class not decreasing below 75% of enrolled students and also not below 50% of intake approved by AICTE. After branch change the intake must not be more than approved AICTE intake including the fee waiver seats.
  - vi. Branch change can be made only against clear vacancy in a particular branch, Vacancy (V) being defined as:  $V = I - (\text{Reg} + \text{Rep} + \text{Lat})$   
where I = The prescribed intake for the branch including 10% intake for fee waiver seats.  
Reg = No. of regular students who have been promoted & registered in third semester (including NRI & Management Quota seats)  
Rep = No. of students from previous batches, registered in third semester as a regular students.  
Lat = No. of students admitted & registered in third semester directly through lateral entry against vacant seats at first year level.  
Branch Change shall not be permitted to any course where  $(\text{Reg} + \text{Rep} + \text{Lat}) > \text{or} = I$  under no circumstances, there shall be any exception to the above stipulations.
  - vii. Branch Change shall be strictly according to the Merit list prepared by the college on the basis of total marks obtained by a student in First Year University Examination. Only those students who have passed in all the subjects (without any carry over paper or grace in any subject of any semester) shall be considered.
  - viii. B.Tech. Biotechnology, B.Tech. Agriculture or Lateral Entry students shall not be eligible for branch change.
  - ix. Students admitted on any seat which is over and above the AICTE sanctioned intake (such as Lateral entry, Kashmiri migrant) shall not be eligible for branch change.
  - x. Change of Branch should be completed within 10 days of the announcement of First & Second Semester (First Year) result.
  - xi. Excess intake in any branch shall disentitle the college to effectuate any branch change in that discipline until the punitive measure, such as reduction in intake etc. as imposed by Dr. A.P.J. Abdul Kalam Technical University is effective.
  - xii. College / students shall not be entitled to any relief, if the guidelines mentioned above for permitting branch change are not strictly adhered to.





The curriculum prescribed by Dr. A.P.J. Abdul Kalam Technical University, Lucknow will be followed by the college which is available on the website of the University.

### Specialized Laboratories

#### Computer Science

Computer Programming Project ('C' Language)  
Data Base Management  
Software Engineering  
Web Technology  
Computer Graphics  
Operating System  
Computer Network  
Computer Architecture  
Distributed System  
Data Mining & Data Warehousing  
Object Oriented System  
Information & Network Security System  
Digital Image Processing  
Software Engineering  
Advance Computer Architecture  
Data Structures  
Numerical Technologies  
Algorithms

#### Electronics & Communication

Electronic Devices  
Workshop & Printed Circuit Board  
Electronic Circuits  
Digital Electronics  
Analog Communication  
Microprocessor  
Digital Communication  
Digital Signal Processing  
Robotics  
Microwave Engineering  
Telemetry  
Digital Integrated circuit  
Integrated circuit  
Project  
Instrumentation & Measurement

#### Electrical & Electronics

Electrical Engineering  
Electrical Machines  
Electrical Measurement  
Networks  
Power Electronics  
Control System  
Power Systems  
Electrical Instrumentation  
Project & Simulation

#### Electrical Engineering

Electrical Engineering  
Electrical Machines  
Electrical Measurement  
Power Electronics  
Electrical Instrumentation

#### Basic Sciences

**Chemistry**  
Titrimetry  
Colorimetry  
pH-metry  
Polymer Chemistry  
Organic Analysis and Synthesis  
**Physics**  
Sonometer  
Newton Ring  
Poiseuille's  
Nodal Slide  
Half Shade Polarimeter  
Plane Transmission Grating  
Cary Foster's Bridge  
Variation of Magnetic Field  
Stefan's Law  
Energy Band Gap

#### Professional Communication

English Language Lab

#### Mechanical

Fluid Mechanics  
Dynamics of Machines  
Computer Aided Drafting  
Applied Thermodynamics  
Material Science  
Heat & Mass Transfer  
Mechanical Measurements  
Fluid Machinery  
Refrigeration & Air-conditioning  
Computer Aided Manufacturing  
Computer Aided Design  
Automobile Engineering  
Machine Design  
Engineering Mechanics  
Workshop  
Drawing Hall

#### Information Technology

E-Commerce  
Information System  
Web Technology  
Software Project Management  
Cryptography & Network Security  
Artificial Intelligence  
IT In-frastructure Management  
C Programming  
Project  
Software Engineering  
Operating System  
Data Structures Lab  
OOPS Lab  
Algorithm Lab  
Computer Graphics Lab  
DBMS  
Computer Network  
Distributed System



## Shri Ram Murti Smarak College of Engineering & Technology (Bareilly Campus)

### BRANCH- CS (2013 Batch)

| SL. No. | NAME              | %     | Amount |
|---------|-------------------|-------|--------|
| 1       | Kopal Agarwal     | 83.90 | 30000  |
| 2       | Aashna Sahni      | 83.80 | 30000  |
| 3       | Ayushi Goel       | 83.30 | 30000  |
| 4       | Shubhangi Pandey  | 83.25 | 30000  |
| 5       | Vishi Jain        | 82.70 | 30000  |
| 6       | Ayushi Saxena     | 82.35 | 30000  |
| 7       | Anmol Gupta       | 82.20 | 30000  |
| 8       | Anshika Saxena    | 81.60 | 30000  |
| 9       | Megha Agarwal     | 80.65 | 30000  |
| 10      | Rajat Gupta       | 80.55 | 30000  |
| 11      | Aayushi Agarwal   | 80.45 | 30000  |
| 12      | Riyanshi Agarwal  | 80.35 | 30000  |
| 13      | Gurjeet Kaur      | 80.30 | 30000  |
| 14      | Riya Anand        | 80.25 | 30000  |
| 15      | Shweta Patel      | 80.20 | 30000  |
| 16      | Arth Pundir       | 80.15 | 30000  |
| 17      | Faza Aslam        | 80.00 | 30000  |
| 18      | Shreya Verma      | 79.80 | 20000  |
| 19      | Ankur Saxena      | 79.70 | 20000  |
| 20      | Adesh Srivastava  | 79.35 | 20000  |
| 21      | Himanshu Soni     | 79.10 | 20000  |
| 22      | Monika Maheshwari | 78.60 | 20000  |
| 23      | Parul Gupta       | 78.40 | 20000  |
| 24      | Saumini Tripathi  | 78.35 | 20000  |
| 25      | Jasleen Kaur      | 78.30 | 20000  |
| 26      | Paras Jot Singh   | 77.95 | 20000  |
| 27      | Shivani Singhal   | 77.80 | 20000  |
| 28      | Shalini Gupta     | 77.65 | 20000  |
| 29      | Swati Gupta       | 77.40 | 20000  |
| 30      | Swechchha Nigam   | 77.10 | 20000  |
| 31      | Vishal Singh      | 76.55 | 20000  |
| 32      | Manika Bhargava   | 76.30 | 20000  |
| 33      | Ashish Sharma     | 75.90 | 20000  |

### BRANCH- CS (2014 Batch)

| SL. No. | NAME           | %     | Amount |
|---------|----------------|-------|--------|
| 1       | Shubhi Agarwal | 85.55 | 35000  |
| 2       | Saumya Agarwal | 85.40 | 35000  |
| 3       | Garima Singh   | 85.15 | 35000  |

|    |                          |       |       |
|----|--------------------------|-------|-------|
| 4  | Riya Agarwal             | 84.55 | 30000 |
| 5  | Apoorva Nayal            | 83.65 | 30000 |
| 6  | Tarushi Agarwal          | 83.60 | 30000 |
| 7  | Kritika Joshi            | 83.05 | 30000 |
| 8  | Shobhit Mishra           | 83.00 | 30000 |
| 9  | Mahesh Kumar Maurya      | 82.65 | 30000 |
| 10 | Varsha Gupta             | 82.50 | 30000 |
| 11 | Rahul Agarwal            | 82.15 | 30000 |
| 12 | Komal Arya               | 82.00 | 30000 |
| 13 | Rachna Purwar            | 81.10 | 30000 |
| 14 | Sanjay Kumar             | 81.00 | 30000 |
| 15 | Tanisha Khandelwal       | 80.80 | 30000 |
| 16 | Asheesh Pandey           | 80.05 | 30000 |
| 17 | Gurbaksh Singh Gabbi     | 80.05 | 30000 |
| 18 | Gaurav Dwivedi           | 79.65 | 20000 |
| 19 | Sonu Kumar Singh (a.k.s) | 79.60 | 20000 |
| 20 | Abhishek Kr. Singh       | 79.10 | 20000 |
| 21 | Anjali Saxena            | 78.85 | 20000 |
| 22 | Vidisha Agarwal          | 78.45 | 20000 |
| 23 | Naveksha Jain            | 78.10 | 20000 |
| 24 | Tanya Agarwal            | 77.65 | 20000 |
| 25 | Priyanka Bhatia          | 77.30 | 20000 |
| 26 | Arpit Mehrotra           | 76.85 | 20000 |
| 27 | Sonu Patel               | 76.45 | 20000 |
| 28 | Apoorv Agarwal           | 76.40 | 20000 |
| 29 | Pradeep Kumar            | 76.05 | 20000 |
| 30 | Akanksha Verma           | 75.85 | 20000 |
| 31 | Tamanjeet Kaur           | 75.30 | 20000 |
| 32 | Himanshu Sharma          | 75.15 | 20000 |
| 33 | Vidushi                  | 75.00 | 20000 |

### BRANCH- CS (2015 Batch)

| SL. No. | NAME              | %     | Amount |
|---------|-------------------|-------|--------|
| 1       | Suramya Saraswat  | 86.30 | 86000  |
| 2       | Laxmi Rana        | 83.40 | 30000  |
| 3       | Diwakar Singh     | 82.95 | 30000  |
| 4       | Gauri Agarwal     | 82.25 | 30000  |
| 5       | Niharika Vishnani | 82.15 | 30000  |
| 6       | Rishabh Verma     | 81.85 | 30000  |





|    |                      |       |       |
|----|----------------------|-------|-------|
| 11 | Shivangi Mishra      | 81.35 | 30000 |
| 12 | Garima Agarwal       | 81.00 | 30000 |
| 13 | Lavi Singh           | 80.95 | 30000 |
| 14 | Sanchit Agarwal      | 80.10 | 30000 |
| 15 | Yukti Saxena         | 80.10 | 30000 |
| 16 | Anurag Mishra        | 79.85 | 20000 |
| 17 | Krishna Bhasin       | 79.55 | 20000 |
| 18 | Shreyanshi Vashistha | 79.45 | 20000 |
| 19 | Akshita Johari       | 79.20 | 20000 |
| 20 | Vikas Pal            | 78.90 | 20000 |
| 21 | Mahima Pawan Sachdev | 78.40 | 20000 |
| 22 | Dilavar Singh        | 77.75 | 20000 |
| 23 | Himanshu Garg        | 77.55 | 20000 |
| 24 | Sakshi Suri          | 77.35 | 20000 |
| 25 | Ambrish Shukla       | 77.30 | 20000 |
| 26 | Shagun Tripathi      | 77.15 | 20000 |
| 27 | Manas Jaiswal        | 76.80 | 20000 |
| 28 | Shashank Shukla      | 76.80 | 20000 |
| 29 | Ambuj Verma          | 76.70 | 20000 |
| 30 | Devyani Goyal        | 76.55 | 20000 |
| 31 | Tanu Goel            | 76.55 | 20000 |
| 32 | Somendra Kumar       | 76.40 | 20000 |
| 33 | Deepak Kumar Gangwar | 76.20 | 20000 |
| 34 | Ramchandra Prajapati | 75.75 | 20000 |
| 35 | Mukund Bihari Sharma | 75.35 | 20000 |
| 36 | Rohit Kumar          | 75.30 | 20000 |

### BRANCH- EC (2013 Batch)

| SL. No. | NAME                 | %     | Amount |
|---------|----------------------|-------|--------|
| 1       | Harshita Devyani     | 82.45 | 30000  |
| 2       | Somya Khanduja       | 81.35 | 30000  |
| 3       | Shalini Rai          | 81.15 | 30000  |
| 4       | Swarnima Gupta       | 80.05 | 30000  |
| 5       | Vaishali Verma       | 78.75 | 20000  |
| 6       | Manish Kumar Rajpoot | 78.10 | 20000  |
| 7       | Hemant Kalwani       | 77.75 | 20000  |
| 8       | Shubham Mishra       | 78.50 | 20000  |
| 9       | Somya                | 76.95 | 20000  |
| 10      | Tanya                | 76.85 | 20000  |
| 11      | Priya Verma          | 75.60 | 20000  |
| 12      | Himanshu Arora       | 75.45 | 20000  |
| 13      | Mansi Gupta          | 75.30 | 20000  |

### BRANCH- EC (2014 Batch)

| SL. No. | NAME            | %     | Amount |
|---------|-----------------|-------|--------|
| 1       | Kankshi Gangwar | 82.40 | 30000  |

|    |                          |       |       |
|----|--------------------------|-------|-------|
| 2  | Ashima Arora             | 82.10 | 30000 |
| 3  | Prateek Agarwal          | 81.40 | 30000 |
| 4  | Rachit Saxena            | 81.30 | 30000 |
| 5  | Shudhanshu Ranjan Pandey | 81.05 | 30000 |
| 6  | Lalima Saxena            | 79.60 | 20000 |
| 7  | Shivangi Bhandari        | 79.15 | 20000 |
| 8  | Abhishek Kumar Gupta     | 78.55 | 20000 |
| 9  | Pragya Latawa            | 77.85 | 20000 |
| 10 | Satish Chand             | 77.60 | 20000 |
| 11 | Sakshee Shahi            | 77.05 | 20000 |
| 12 | Shreya Nigam             | 76.70 | 20000 |
| 13 | Vatsal Tripathi          | 76.65 | 20000 |
| 14 | Ayush Saxena             | 75.90 | 20000 |
| 15 | Shilpi Sagar             | 75.10 | 20000 |

### BRANCH- EC (2014 Batch)

| SL. No. | NAME             | %     | Amount |
|---------|------------------|-------|--------|
| 1       | Rimjhim Gupta    | 88.25 | 88000  |
| 2       | Shivani Jaiswal  | 85.05 | 35000  |
| 3       | Ritika Varshney  | 82.85 | 30000  |
| 4       | Anshita Agarwal  | 80.55 | 30000  |
| 5       | Ashi Jhanwar     | 79.40 | 20000  |
| 6       | Sakshi Yadav     | 79.10 | 20000  |
| 7       | Sajal Khandelwal | 78.65 | 20000  |
| 8       | Vaibhav Verma    | 78.35 | 20000  |
| 9       | Mritunjay Dubey  | 77.10 | 20000  |
| 10      | Swasti Dwivedi   | 76.65 | 20000  |
| 11      | Shambhavi Mishra | 76.55 | 20000  |
| 12      | Shalvi Khanna    | 75.45 | 20000  |
| 13      | Alaual Huqe      | 75.30 | 20000  |
| 14      | Shivam Shukla    | 75.25 | 20000  |

### BRANCH- EN (2013 Batch)

| SL. No. | NAME                 | %     | Amount |
|---------|----------------------|-------|--------|
| 1       | Arti Mishra          | 84.10 | 30000  |
| 2       | Utkarsh Rastogi      | 82.20 | 30000  |
| 3       | Akhand Pratap Yadav  | 80.10 | 30000  |
| 4       | Amardeep Yadav       | 79.90 | 20000  |
| 5       | Arpit Kasera         | 79.20 | 20000  |
| 6       | Arpit Goyal          | 79.05 | 20000  |
| 7       | Ashutosh Kumar Dubey | 77.65 | 20000  |
| 8       | Sujit Singh          | 77.50 | 20000  |
| 9       | Ashish Verma         | 77.30 | 20000  |
| 10      | Sonam Jha            | 76.70 | 20000  |
| 11      | Prastuti Singh       | 75.70 | 20000  |



# Scholarship Holders

## BRANCH- EN (2014 Batch)

| SL. No. | NAME                 | %     | Amount |
|---------|----------------------|-------|--------|
| 1       | Shraddha             | 84.35 | 30000  |
| 2       | Manoj Kumar          | 81.30 | 30000  |
| 3       | Shantanu Kumar Singh | 80.55 | 30000  |
| 4       | Shubham Tripathi     | 79.40 | 20000  |
| 5       | Danish Iqbal         | 78.10 | 20000  |
| 6       | Nimisha Goyal        | 78.05 | 20000  |
| 7       | Vanshaj Chandra      | 76.80 | 20000  |
| 8       | Akash Pandey         | 76.45 | 20000  |
| 9       | Devendra Mishra      | 76.30 | 20000  |
| 10      | Sneh Pratap Singh    | 75.55 | 20000  |
| 11      | Amit Kumar Gupta     | 75.35 | 20000  |

## BRANCH- EN (2015 Batch)

| SL. No. | NAME              | %     | Amount |
|---------|-------------------|-------|--------|
| 1       | Zeeshan Ahmed     | 85.40 | 35000  |
| 2       | Nipra Dwivedi     | 84.30 | 30000  |
| 3       | Shubham Rai       | 79.25 | 20000  |
| 4       | Sukesh Gupta      | 78.85 | 20000  |
| 5       | S M Adnan         | 78.55 | 20000  |
| 6       | Prashant Sharma   | 78.35 | 20000  |
| 7       | Shivam Sahu       | 78.25 | 20000  |
| 8       | Ankit Kumar Singh | 78.20 | 20000  |
| 9       | Shivam Seth       | 78.10 | 20000  |
| 10      | Pallawi Pandey    | 76.45 | 20000  |

## BRANCH- IT (2013 Batch)

| SL. No. | NAME               | %     | Amount |
|---------|--------------------|-------|--------|
| 1       | Shraddha Gupta     | 81.75 | 30000  |
| 2       | Shruti Agarwal     | 81.00 | 30000  |
| 3       | Ranpreet Kaur      | 80.70 | 30000  |
| 4       | Unnati Saxena      | 79.70 | 20000  |
| 5       | Shikhar Agarwal    | 79.50 | 20000  |
| 6       | Astha Shrivastava  | 79.35 | 20000  |
| 7       | Srashti Singhal    | 78.90 | 20000  |
| 8       | Abhay Kumar Gupta  | 78.15 | 20000  |
| 9       | Vaishali Sharma    | 77.55 | 20000  |
| 10      | Fabeha Khan        | 77.15 | 20000  |
| 11      | Aishwarya          | 76.35 | 20000  |
| 12      | Jitender Pal Singh | 76.25 | 20000  |
| 13      | Rajat Tripathi     | 75.30 | 20000  |
| 14      | Richa Yadav        | 75.15 | 20000  |

## BRANCH- IT (2014 Batch)

| SL. No. | NAME              | %     | Amount |
|---------|-------------------|-------|--------|
| 1       | Megha Aggarwal    | 84.95 | 30000  |
| 2       | Simran Chhabra    | 84.90 | 30000  |
| 3       | Shivangi Sharma   | 81.60 | 30000  |
| 4       | Neha Singh        | 81.20 | 30000  |
| 5       | Shivani Malik     | 80.50 | 30000  |
| 6       | Vartika           | 80.05 | 30000  |
| 7       | Mohini Gupta      | 79.70 | 20000  |
| 8       | Apoorva Bhadauria | 79.25 | 20000  |
| 9       | Sakshi Jain       | 78.00 | 20000  |
| 10      | Surabhi Sahu      | 76.25 | 20000  |

## BRANCH- IT (2015 Batch)

| SL. No. | NAME            | %     | Amount |
|---------|-----------------|-------|--------|
| 1       | Gurpreet Kaur   | 86.15 | 86000  |
| 2       | Shaswat Shukla  | 81.00 | 30000  |
| 3       | Ana Farhat      | 80.15 | 30000  |
| 4       | Ishita Agarwal  | 79.00 | 20000  |
| 5       | Simran Sharma   | 78.70 | 20000  |
| 6       | Chandni Khan    | 76.20 | 20000  |
| 7       | Akansha Agarwal | 76.10 | 20000  |
| 8       | Soma Arora      | 75.55 | 20000  |

## BRANCH- ME (2013 Batch)

| SL. No. | NAME                           | %     | Amount |
|---------|--------------------------------|-------|--------|
| 1       | Ashutosh Sharma                | 83.05 | 30000  |
| 2       | Shreyansh Shekhar              | 82.60 | 30000  |
| 3       | Awanish Rao                    | 82.35 | 30000  |
| 4       | Mudit Gupta                    | 81.85 | 30000  |
| 5       | Faraz Husain                   | 81.55 | 30000  |
| 6       | Aakash Srivastava              | 80.85 | 30000  |
| 7       | Aayush Trivedi                 | 79.70 | 20000  |
| 8       | Raghendra Pratap Narayan Singh | 79.20 | 20000  |
| 9       | Dillip Kumar                   | 78.10 | 20000  |
| 10      | Jitendra Shukla                | 78.00 | 20000  |
| 11      | Vaibhav Saxena                 | 77.85 | 20000  |
| 12      | Harshit Charlie Shukla         | 76.70 | 20000  |
| 13      | Kulveer Singh                  | 76.65 | 20000  |
| 14      | Pulkit Srivastava              | 76.65 | 20000  |
| 15      | Ankit Kumar Singh              | 75.75 | 20000  |
| 16      | Mohd Taiyyab                   | 75.55 | 20000  |





### BRANCH- ME (2014 Batch)

| SL. No. | NAME            | %     | Amount |
|---------|-----------------|-------|--------|
| 1       | Vishal Gupta    | 82.95 | 30000  |
| 2       | Manish Tripathi | 81.95 | 30000  |
| 3       | Kapil Kr. Gupta | 81.55 | 30000  |
| 4       | Pintoo Yadav    | 80.55 | 30000  |
| 5       | Ashutosh Pandey | 78.30 | 20000  |
| 6       | Sachin Yadav    | 78.10 | 20000  |
| 7       | Akash Saxena    | 77.65 | 20000  |
| 8       | Aleena Sadaat   | 76.15 | 20000  |
| 9       | Ankit Ranjan    | 75.75 | 20000  |
| 10      | Kishore Rajput  | 75.05 | 20000  |

### BRANCH- ME (2015 Batch)

| SL. No. | NAME                  | %     | Amount |
|---------|-----------------------|-------|--------|
| 1       | Naman Upadhyay        | 87.85 | 87000  |
| 2       | Anurag Srivastava     | 81.55 | 30000  |
| 3       | Abhinay Mishra        | 81.45 | 30000  |
| 4       | Saurabh Singh         | 81.35 | 30000  |
| 5       | Osho Awasthi          | 80.00 | 30000  |
| 6       | Mohit Saxena          | 79.60 | 20000  |
| 7       | Ashwin Singh          | 79.30 | 20000  |
| 8       | Gangesh Kr. Agharhari | 79.05 | 20000  |
| 9       | Aditya Jaiswal        | 78.55 | 20000  |
| 10      | Sandeep Verma         | 77.65 | 20000  |
| 11      | Ayush Bhasin          | 77.15 | 20000  |
| 12      | Yash Johri            | 75.90 | 20000  |

**Shri Ram Murti Smarak  
College of Engineering & Technology  
(Lucknow Campus)**

### B.TECH (2013 Batch)

| SL. No. | BRANCH | NAME                 | %     | Amount |
|---------|--------|----------------------|-------|--------|
| 1       | EC     | Smriti Rai           | 75.25 | 20000  |
| 2       | EC     | Mayur Dev            | 75.00 | 20000  |
| 3       | EC     | Mayank Shadwani      | 75.30 | 20000  |
| 4       | EC     | Shivani Sachan       | 83.10 | 30000  |
| 5       | EC     | Shubham              | 75.60 | 20000  |
| 6       | ME     | Amar Nath Jha        | 76.25 | 20000  |
| 7       | ME     | Ashutosh Kumar Rai   | 76.15 | 20000  |
| 8       | ME     | Sachin Kumar Chauhan | 75.40 | 20000  |

### B.TECH (2015 Batch)

| SL. No. | BRANCH | NAME                  | %     | Amount |
|---------|--------|-----------------------|-------|--------|
| 1       | CS     | Kopal Agarwal         | 81.60 | 30000  |
| 2       | ME     | Harendra Kumar Maurya | 78.00 | 20000  |
| 3       | ME     | Akash Kumar           | 75.65 | 20000  |

**Shri Ram Murti Smarak College of  
Engineering, Technology & Research  
(Bareilly Campus)**

### B.TECH (2013 Batch)

| SL. No. | BRANCH | NAME            | %    | Amount |
|---------|--------|-----------------|------|--------|
|         | CS     | Vanshika Shukla | 81.8 | 30000  |
|         | CS     | Kumari Hemlata  | 80.3 | 30000  |
|         | CS     | Astha Tewari    | 78.1 | 20000  |
|         | CS     | Tripti Tripathi | 77.6 | 20000  |
|         | CS     | Anshika Goel    | 77.3 | 20000  |
|         | CS     | Soumya Agarwal  | 75.6 | 20000  |

### B.TECH (2014 Batch)

| SL. No. | BRANCH | NAME            | %    | Amount |
|---------|--------|-----------------|------|--------|
|         | CS     | Varsha Saxena   | 78.3 | 20000  |
|         | CS     | Devanshi Saxena | 77.5 | 20000  |
|         | CS     | Shamama Kamal   | 77.2 | 20000  |

### B.TECH (2015 Batch)

| SL. No. | BRANCH | NAME              | %    | Amount |
|---------|--------|-------------------|------|--------|
|         | CS     | Anchita Agarwal   | 85.4 | 35000  |
|         | CS     | Km. Kratika Rawat | 79.8 | 20000  |
|         | EC     | Shivi Agarwal     | 77.2 | 20000  |
|         | CS     | Sandhya Shukla    | 75.9 | 20000  |



## Master of Technology

BAREILLY CAMPUS

Approved by AICTE, New Delhi and Affiliated to Dr. A.P.J.A.K. Technical University, Lucknow  
(Formerly U.P. Technical University)

### Goal of the Programme

*The uniqueness of the M.Tech. Programme lies in the fact that, though the knowledge of technology development in the students is a major focus, a lot of emphasis is laid on developing their technical skills as well as managerial skills. The one year thesis that the students do during the final year forms an important part of the curriculum. It includes work on the live industry projects, application development or research in various areas of Software Engineering, CAD/CAM, Microwave Engineering & Electric Drive & Control. Armed with such profound and exhaustive knowledge of the latest technologies, the students are a step ahead of others.*

Following specialized programmes in M.Tech. are offered by the college

- CAD/CAM
- Electrical Drives & Control
- Software Engineering
- Microwave Engineering







## Admission Criterion

### ADMISSION PROCEDURE

#### M.Tech - 1st Year

Admissions are as per following :

100% seats of all branches are allotted as per State Government / AICTE directives through Dr. A.P.J. Abdul Kalam Technical University counseling.

Vacant seats and left over seats in all branches are allocated on the basis of merit along with personal interview.

#### ELIGIBILITY

- i The candidate must possess B.Tech degree in relevant branch and must have qualified GATE/ENTRANCE TEST (FATE) conducted by Dr. APJAKT, University.
- ii The candidate having valid score card of GATE is exempted from Entrance Test conducted by University

#### FEE STRUCTURE

Fee structure is available on college website . Fee is to be paid by Demand Draft drawn in favour of "SRMSCET" payable at Bareilly.

**DURATION** : 2 Years (Four Semesters) Full Time

### Appreciation & Recognition of Merit

Merit must be recognized and duly honoured. This creates a healthy competition among the students, acts as a fountainhead of encouragement and becomes a shining example for others to follow. SRMS Trust has been fortunate in receiving excellent support from the Trustees and well-wishers, who have come forward and instituted various medals and other awards to encourage our students.

The medals and awards instituted are as follows:

- Shri Ram Murti Gold Medal for the highest scoring final year out-going M.Tech. student of the college.
- Shri Ram Murti Silver Medal for the second highest scoring final year out-going M.Tech. student of the college.
- A cash prize of Rs. 21,000/-** is awarded to the student securing first position in the passing out batch subject to the condition that the student has secured more than 75% Marks.

### P.G. Scholarship

Trust provides ₹6000 per month to all M. Tech. candidate in 1st year and ₹ 7000 per month in 2nd year (10 months per year). GATE qualified candidates will get AICTE stipend i.e. ₹ 8000 per month from AICTE + ₹ 3000 and 3500 in I and II year respectively.

## SCHOLARSHIP HOLDERS

### M.Tech. (2014 Batch)

| SL. No. | BRANCH    | NAME            | %    | Amount |
|---------|-----------|-----------------|------|--------|
| 1       | Software  | Anshika Agarwal | 76.9 | 20000  |
| 2       | Software  | Rifa Nizam Khan | 75.2 | 20000  |
| 3       | Microwave | Maleeha Khan    | 75.8 | 20000  |

### M.Tech. (2015 Batch)

| SL. No. | BRANCH    | NAME          | %     | Amount |
|---------|-----------|---------------|-------|--------|
| 1       | Microwave | Akriti Singh  | 76.64 | 20000  |
| 2       | Microwave | Padmini Nigam | 81.14 | 30000  |
| 3       | Microwave | Ravi Verma    | 75.21 | 20000  |





## Curriculum

### Computer Science & Engineering (Software Engineering)

#### Semester - I

|         |                                       |
|---------|---------------------------------------|
| MTCS101 | Foundation of Computer Science        |
| MTCS102 | Advanced Algorithm                    |
| MTCS017 | Departmental Elective                 |
| MTCS027 | Departmental Elective II              |
|         | Research Process & Methodology        |
| MTCS151 | Lab-I: Foundation of computer Science |
| MTCS152 | Lab-II: Advanced Algorithm            |

#### Semester - II

|         |   |
|---------|---|
| MTCS201 | Multi Core Architecture and Programming |
| MTCS202 | Wireless Mobile Networks                |
| MTCS037 | Departmental Elective III               |
| MTCS047 | Departmental Elective IV                |
| MTCS057 | Elective V                              |
| MTCS251 | Lab-III: Wireless & Mobile Networks     |
| MTCS252 | Seminar-I                               |

#### Semester - III

|         |              |
|---------|--------------|
| MTCS351 | Seminar-II   |
| MTCS352 | Dissertation |

#### Semester - IV

|         |                      |
|---------|----------------------|
| MTCS451 | Dissertation (Final) |
|---------|----------------------|

#### Department Elective - I

1. MTCS011: Software Requirements & Specifications
2. MTCS012: Software Process & Management
3. MTCS013: Cloud Computing
4. MTCS014: Embedded Systems
5. MTCS015: Advanced Database
6. MTCS016: Modeling and Simulation

#### Department Elective - II

1. MTCS021: Sensor Network
2. MTCS022: Software Testing & Auditing
3. MTCS023: Real Time Systems
4. MTCS024: Data Warehousing & Data Mining
5. MTCS025: Genetic Algorithms
6. MTCS026: Neural Networks

#### Department Elective - III

1. MTCS031: Machine Learning
2. MTCS032: High Performance Networking
3. MTCS033: Software Metrics & Quality Assurance
4. MTCS034: Big Data Analytics
5. MTCS035: Cyber Security and Laws
6. MTCS036: Multimedia Systems

#### Department Elective - IV

1. MTCS041: Distributed Databases
2. MTCS042: Software Project Planning & Management
3. MTCS043: Network Management
4. MTCS044: Robotics
5. MTCS045: Data Centre Management
6. MTCS046: Digital Forensics

#### Department Elective - V

1. MTCS051: Optimization Techniques
2. MTCS052: Digital Image Processing
3. MTCS053: Professional Aspects in Software Engineering
4. MTCS054: Storage Area Network
5. MTCS055: Optical Networks
6. MTCS056: Advanced Data Modeling

### Mechanical Engineering (CAD/CAM)

#### Semester - I

|          |                                       |
|----------|---------------------------------------|
| MTME 101 | Simulation Modelling and Analysis     |
| MTCM 101 | Computer Aided Design                 |
|          | Departmental Elective-I               |
|          | Departmental Elective-II              |
|          | Research Process & Methodology        |
| MTME 151 | Simulation Modelling and Analysis lab |
| MTCM 151 | Computer Aided Design Lab             |

#### Semester - II

|          |  |
|----------|--|
| MTCM 201 | Computer Graphics & Geometric Modeling |
| MTME 202 | Advanced Mechanics of Solid            |
|          | Departmental Elective-III              |
|          | Departmental Elective-IV               |
|          | Elective-V                             |

|          |  |
|----------|--|
| MTCM 251 | Computer Graphics & Geometric Modeling Lab |
| MTCM 252 | Seminar-I                                  |

#### Semester - III

|          |              |
|----------|--------------|
| MTCM 352 | Seminar-II   |
| MTCM 351 | Dissertation |

#### Semester - IV

|          |                      |
|----------|----------------------|
| MTCM 451 | Dissertation (Final) |
|----------|----------------------|

#### Department Elective - I

|          |  |
|----------|--|
| MTCM 011 | Computer Aided Inspection and Testing    |
| MTCM 012 | Instrumentation and Experimental Methods |
| MTCM 013 | Advanced Automatic Control               |
| MTCM 014 | Computer Aided Manufacturing             |

#### Department Elective - II

|          |                                |
|----------|--------------------------------|
| MTCM 021 | Bearing Design                 |
| MTCM 022 | Advanced Mechanical Vibrations |
| MTCM 023 | Artificial Intelligence        |
| MTCM 024 | Friction and Wear              |

#### Department Elective - III

|          |  |
|----------|--|
| MTME 031 | Advanced Finite Element Analysis             |
| MTCM 031 | Computer Aided Analysis Of Mechanical System |
| MTCM 032 | Fracture Analysis                            |
| MTCM 033 | Mechatronics                                 |

#### Department Elective - IV

|          |  |
|----------|--|
| MTME 041 | Optimisation Techniques And Design of Experiment |
| MTCM 041 | Dynamics Of Mechanical Systems                   |
| MTCM 042 | Advanced Machine Design                          |
| MTCM 043 | Mechanics Of Composite Material                  |

#### Department Elective - V

|          |                                  |
|----------|----------------------------------|
| MTME 051 | Flexible Manufacturing Systems   |
| MTCM 051 | Robotics And Control             |
| MTME 053 | Additive Manufacturing & Tooling |
| MTCM 052 | Manufacturing System Analysis    |

Note : Elective subjects are subject to availability of sufficient number of students and Infrastructural facilities.





## Curriculum

### Electrical Engineering (Electrical Drives & Control)

#### Semester - I

- MTEE-101 Advanced Control System
- MTEE-102 Power System Operation & Control
- MTEE-01? Departmental Elective-i
- MTEE-02? Departmental Elective-ii  
Research Process & Methodology
- MTEE-151 Advanced Control System Lab
- MTEE-152 Advanced Power System Lab

#### Semester - II

- MTEE-201 Microcontroller & Its Applications
- MTEE-202 Advanced Instrumentation Control
- MTEE-03? Departmental Elective - III
- MTEE-04? Departmental Elective -IV
- MTEE-05? Departmental Elective -V
- MTEE-251 Advanced Microcontroller Lab
- MTEE-252 SEMINAR-I

#### Semester - III

- MTEE-351 Seminar-II
- MTEE-352 Dissertation

#### Semester - IV

- MTEE-451 Dissertation (Final)

#### ELECTIVE-I

- MTEE-011 High Voltage Engineering
- MTEE-012 Digital Signal Processing
- MTEE-013 Non Conventional Energy Sources & Energy Converters

#### ELECTIVE-II

- MTEE-021 Facts
- MTEE-022 Power Electronic Drives
- MTEE-023 Energy System Management

#### ELECTIVE-III

- MTEE-031 Power System Planning
- MTEE-032 Digital Control System
- MTEE-033 Robotics

#### ELECTIVE-IV

- MTEE-041 Neural Networks & Fuzzy System
- MTEE-042 Modelling & Simulation Of Power Electronic Circuits

- MTEE-043 Power System Optimization

#### ELECTIVE-V

- MTEE-051 Smart Grid
- MTEE-052 Power Quality
- MTEE-053 Optimization Techniques

### Electronics & Communication Engineering ( Microwave Engineering)

#### Semester - I

- MTEC101 Advanced Engineering Mathematics
- MTEC102 Advanced Digital Communication
- MTEC01? Departmental Elective I
- MTEC02? Departmental Elective II  
Research Process & Methodology
- MTEC151 Lab I: Optical Fibre Communication Lab
- MTEC152 Lab II: Communication Engineering Lab

#### Semester - II

- MTEC201 Discrete Time Signal Processing
- MTEC202 Detection and Estimation Theory
- MTEC03? Departmental Elective III
- MTEC04? Departmental Elective IV
- MTEC05? Departmental Elective V
- MTEC251 Lab III: Modeling and Simulation of Communication System Lab
- MTEC252 Seminar I

#### Semester - III

- MTEC351 Seminar II
- MTEC352 Dissertation

#### Semester - IV

- MTEC451 Dissertation

#### Semester - III

- MTEC351 Seminar II
- MTEC352 Dissertation

Total 18 600

#### Semester - IV

- MTEC451 Dissertation

#### Departmental Elective I

- MTEC 011 RF Circuit Design
- MTEC 012 Information Theory
- MTEC 013 Antenna Theory and Design

#### Departmental Elective II

- MTEC 021 Optical Communication
- MTEC 022 MIMO Communication Systems
- MTEC 023 Next Generation Networks

#### Departmental Elective III

- MTEC 031 Internet of Things
- MTEC 032 Error Control & Coding
- MTEC 033 Microwave Communication Engineering & Systems

#### Departmental Elective IV

- MTEC 041 Advanced Optical Networks
- MTEC 042 Advanced Satellite Communication
- MTEC 043 Cognitive Radio

#### Departmental Elective V

- MTEC 051 Advanced Wireless Networks
- MTEC 052 Optoelectronics Devices and Systems
- MTEC 053 Monolithic Microwave Integrated Circuits

Note : Elective subjects are subject to availability of sufficient number of students and Infrastructural facilities.









## Bachelor of Pharmacy

Approved by Pharmacy Council of India  
BAREILLY CAMPUS

### Goal of the Programme

*The goal of this programme is to provide adequate depth of understanding of Pharmacy principles and also to develop presentation and communication skills, which gives confidence in overall managerial abilities of future pharma professionals.*

*The programme also aims at serving the social needs of public, private, corporate, non-corporate and other sectors of the Indian Economy by preparing students for jobs in any field of the Pharmacy profession.*





## Bachelor of Pharmacy



### Admission Procedure

#### B.Pharm - 1<sup>st</sup> Year

Admissions are as per the following :

85% seats of total intake are allotted according to the merit list of UPSEE through online counseling.

15% seats of total intake & Vacant /Lapsed seats are allocated on the basis of merit of 10+2 marks in PCM & PCB and aptitude test/interview carried out by the college /rank in UPSEE.

#### B.Pharm - 2<sup>nd</sup> Year

Candidates who have passed Diploma in Pharmacy (with minimum 60% marks) recognised by the U.P. Board of Technical Education are eligible for admission to Second Year B. Pharm.

#### Fee Structure

Fee structure is available in college website. Fees is to be paid by Demand Draft drawn in favour of "SRMSCET" payable at Bareilly.

### DURATION

4 Years Full Time

### INTEGRITY OF THE SYSTEM

All admissions are done by maintaining transparency at every level.

The admission against management quota is done through advertisement and the list of applicants and their merit is displayed on Notice Board in the college after the screening. Fee charged for both categories of seats is same and as per U.P. Govt. directives.

### ELIGIBILITY

#### 1<sup>st</sup> Year Admission :

Pass in the final examination of 10+2 standard or equivalent (with 55% marks in PCM/ Biology/P.C. Bio-Tech.) from a recognised Board.

#### 2<sup>nd</sup> Year Admission :

Diploma in Pharmacy with 60% aggregate.





The curriculum prescribed by Dr. A.P.J. Abdul Kalam Technical University, Lucknow is followed by the college which is available on the website of the University.

## Specialized Laboratories

In the Bachelor of Pharmacy course the college imparts effective practical training to the students in well-equipped laboratories. The students are also given on-the-job-training. For this purpose the college has the following laboratories for the students:

- Pharmaceutical Chemistry (Inorganic & Organic) Lab.
- Pharmaceutical Analysis
- Medicinal Chemistry & Bio-Chem Lab.
- Physical Pharmacy & Physical Chemistry Lab.
- Pharmaceutics I & II Lab.
- Dispensing & Cosmetology Lab
- Remedial Bio., Human Anatomy, Physiology & Hygiene Lab.
- Research and Instrument Lab.
- Pharmacognosy Lab.
- Microbiology Lab.
- Pharmaceutical Engineering Lab.
- Machine Room.
- Pharmacology Lab.

### Animal House :

The college has a well equipped animal house, as per norms of CPCSEA, Ministry of Social Justice & Empowerment, Govt. of India.

### Herbal Garden :

Herbal garden having adequate number of medicinal plants is maintained. The medicinal plants are used for practical/ demonstration to the students. Various medicinal plants and their parts are used as medicines.

### Drug Formulation :

With an objective of inculcating the habit of research and innovation, the faculty of Pharmacy is engaged in the production of certain pharmaceutical dosage form, such as ointments, capsules, tablets etc. on a small scale for practical knowledge of students.

### Pharmacist Day :

Pharmacist day is celebrated on 15th September of every year. All the students make their oral and poster presentations. Best pharmacist is awarded to a student from final year batch.

### Hospital Training :

Trust is having its own medical college & Hospital. All B. Pharm students get 45 days hospital training which makes them understand First aid (Wound Dressing, Artificial Respiration) various roles of Injections, Prescription, Dispensing & Simple diagnostic reports.

### Industrial Training :

All students undergoes minimum 30 days industrial training for which training development & placement cell help them out to get and grab good opportunities.

### Conference & Faculty Development Program :

Upgradation of knowledge is a continuous process there for conference & Faculty Development Program are being organized every year for upgradation of knowledge of faculty & students .





## Appreciation & Recognition of Merit

*The Trust recognizes all the meritorious students every year on the basis of their annual result of the University.*

*For this the Trust has earmarked*

**₹ TWO CRORES**

*to be distributed to the meritorious students of the Trust Institutions every year.*

THE COLLEGE HAS LAID DOWN THE FOLLOWING CRITERIA FOR THE SCHOLARSHIP :

|  |   |  |              |
|--|---|--|--------------|
| 1. Students securing 86% or more marks in Dr. A.P.J.A.K.T.U. Examination               | Rs. Equivalent to the % of marks secured (Minimum Rs. 86,000/-) | Students securing 80% or more but below 85% in Dr. A.P.J.A.K.T.U. Examination    | Rs. 30,000/- |
| 2. Students securing 85% or more marks but below 86% in Dr. A.P.J.A.K.T.U. Examination | Rs. 35,000/-  | 4. Students securing 75% or more but below 80% in Dr. A.P.J.A.K.T.U. Examination | Rs. 20,000/- |

Merit must be recognized and duly honoured. This creates a healthy competition among the students, and acts as a fountainhead of encouragement and becomes a shining example for others to follow. SRMS Trust has been fortunate in receiving excellent support from the Trustees and well-wishers, who have come forward and instituted various medals and other awards to encourage our students. The medals, awards and cash prize instituted are as follows :-

- Shri Ram Murti Gold Medal** for the highest scoring final year out-going student of the Pharmacy course.
- Shri Ram Murti Silver Medal** for the second highest scoring final year out-going student of the Pharmacy course.
- Shri Ram Murti Bronze Medal** for the third highest scoring final year out-going student of the Pharmacy course.
- Shri Ram Murti Gold Medal** for the best all-rounder of the college of out-going batch of the Pharmacy course.
- A cash prize of Rs. 21,000/-** is awarded to the student securing first position in the passing out batch subject to the condition that the student has secured more than 75% Marks.





## B.Pharm (2013 Batch)



**Shradha Tomar**  
90.20%  
₹ 90,000/-



**Namita Patel**  
87.65%  
₹ 87,000/-



**Madhurima Saha**  
88.80%  
₹ 88,000/-



**Shivani Agarwal**  
86.85%  
₹ 86,000/-



**Lavika Gandhi**  
88.45%  
₹ 88,000/-



**Ankita Sharma**  
86.15%  
₹ 86,000/-

| SL. No. | NAME                 | %     | Amount |
|---------|----------------------|-------|--------|
| 1       | Shivangi Shukla      | 84.75 | 30000  |
| 2       | Ajay Babu Maheshwari | 84.75 | 30000  |
| 3       | Rahul Kumar Singh    | 83.35 | 30000  |
| 4       | Shubham Mishra       | 82.85 | 30000  |
| 5       | Aditi Latawa         | 82.15 | 30000  |
| 6       | Tarmeen Khan         | 82.15 | 30000  |
| 7       | Mohamad Faizan       | 81.30 | 30000  |
| 8       | Umang Somani         | 80.60 | 30000  |
| 9       | Neetoo Singh         | 79.60 | 20000  |
| 10      | Mohd. Aaqib Khan     | 79.45 | 20000  |
| 11      | Prakhar Agarwal      | 78.30 | 20000  |
| 12      | Afreen Naqvi         | 76.70 | 20000  |
| 13      | Anmol Chhabra        | 76.10 | 20000  |
| 14      | Kavita Singh         | 75.95 | 20000  |
| 15      | Nitin Chakraborty    | 75.20 | 20000  |
| 16      | Rohit Kumar          | 75.20 | 20000  |

## B.Pharm (2014 Batch)



**Megha Agarwal**  
90.70%  
₹ 90,000/-



**Divya Singh**  
88.65%  
₹ 88,000/-



**Kartikey Rastogi**  
88.10%  
₹ 88,000/-



**Priya Tripathi**  
86.35%  
₹ 86,000/-

| SL. No. | NAME                 | %     | Amount |
|---------|----------------------|-------|--------|
| 1       | Anurag Sharma        | 84.85 | 30000  |
| 2       | Shwetank Mishra      | 84.80 | 30000  |
| 3       | Shaloo               | 84.70 | 30000  |
| 4       | Pankaj Kumar         | 84.55 | 30000  |
| 5       | Ramit Yadav          | 81.55 | 30000  |
| 6       | Chhavi Saxena        | 84.15 | 30000  |
| 7       | Parul Pali           | 81.10 | 30000  |
| 8       | Fairy                | 80.20 | 30000  |
| 9       | Shubhangi Mukti      | 79.25 | 20000  |
| 10      | Simran Singh         | 78.35 | 20000  |
| 11      | Sonu Kumar           | 77.90 | 20000  |
| 12      | Rahul Vashishtha     | 76.40 | 20000  |
| 13      | Abhishek Kumar Singh | 76.25 | 20000  |
| 14      | Sneha Pali           | 76.20 | 20000  |

## B.Pharm (2015 Batch)



**Chestha Kapoor**  
87.30%  
₹ 87000/-



**Abhishek Kr. Gangwar**  
86.75%  
₹ 86000/-



**Neha Mishra**  
86.10%  
₹ 86000/-

| SL. No. | NAME               | %     | Amount |
|---------|--------------------|-------|--------|
| 1       | Priya Thapa        | 84.90 | 30000  |
| 2       | Komal Middha       | 84.85 | 30000  |
| 3       | Vaibhav Saxena     | 84.35 | 30000  |
| 4       | Rakesh Kumar Yadav | 84.15 | 30000  |
| 5       | Khushboo Yadav     | 83.95 | 30000  |
| 6       | Shivam Mishra      | 83.15 | 30000  |
| 7       | Agransh Agarwal    | 79.60 | 20000  |
| 8       | Deepak Kumar-ii    | 77.05 | 20000  |
| 9       | Arvind Singh       | 75.15 | 20000  |



## Master of Pharmacy

BAREILLY CAMPUS



### Goal of the Programme

*The increased industrialization in Uttar Pradesh, Uttarakhand and adjoining states has increased the demand for qualified and trained personnel across the nation. In view of this, our goal of the M. Pharm Programme is to contribute and fulfill the national need of specialized trained pharmaceutical man-power through prescribed teaching and training programme.*

*Through this programme of post graduate in pharmacy the students will be educated, trained and inculcated to take research & development responsibilities of the country in large and of the world as whole.*

### Specialization offered:

- **Pharmaceutics**

#### **Pharmaceutics:**

The programme provides the professionals with sufficient knowledge and skills to understand the concept and design of various pharmaceutical dosage forms. The professional also having ability to develop and evaluate various novel drug delivery systems to fulfill the changing disease and patient's need. The trained post graduates are very well prepared with knowledge of modern analytical techniques for research in formulation development.

#### **Research Facilities:**

Air conditioned research laboratory equipped with instruments like : FT-IR, HPLC (High performance liquid chromatography), UV visible spectrophotometer (double beam), UV visible spectrophotometer (single beam), Brook Field Viscometer, Brook Field Rheometer, Cold centrifuge, Ultra sonicator, High Speed Vacuum homogenizer and Environmental Chamber, Automatic Multistation Tablet Compression Machine, Six Station Dissolution Rate Test Apparatus etc.





## ADMISSION PROCEDURE

Admissions are as per the following:  
 100% seats are allotted as per State Government / AICTE / PCI directives through UPSEE counseling.  
 Vacant seats and left over seats are allocated on the basis of merit of GPAT/FATE along with personal interview.

## ELIGIBILITY

- The candidate must have B.Pharm degree with minimum of 60% marks from an institutions approved by Pharmacy Council of India.
- The candidate must have qualified GPAT/ University PG Admission Test (FATE)
- The candidate having valid score card of GPAT is exempted from PG Admission Test (FATE).

## FEE STRUCTURE

Fee structure is available on college website, Fee is to be paid by Demand Draft drawn in favour of "SRMSCET" payable at Bareilly.

**DURATION : 2 Years (Four Semesters) Full Time**



## Appreciation & Recognition of Merit

Merit must be recognized and duly honoured. This creates a healthy competition among the students, acts as a fountainhead of encouragement and becomes a shining example for others to follow. SRMSCET has been fortunate in receiving excellent support from the Trustees and well-wishers, who have come forward and instituted various medals and other awards to encourage our students.

The medals and awards instituted are as follows:

- Shri Ram Murti Gold Medal for the highest scoring final year out-going M. Pharm. student of the college.
- Shri Ram Murti Silver Medal for the second highest scoring final year out-going M. Pharm. student of the college.
- A cash prize of Rs. 21,000/-** is awarded to the student securing first position in the passing out batch subject to the condition that the student has secured more than 75% Marks.

## P.G. Scholarship

Trust provides ₹ 6000 per month to all M. Pharm. candidate in 1st year and ₹ 7000 per month in 2nd year (10 months per year). GPAT qualified candidates will get AICTE stipend i.e. ₹ 8000 per month from AICTE + ₹ 3000 and 3500 in I and II year respectively.

## M.Pharm - 1<sup>st</sup> Year

### Semester - I

|               |   |
|---------------|---|
| MPA101        | Modern Pharmaceutical Analytical Techniques   |
| MPH101/MPH201 | Modified Release Drug Delivery System/ Molecular Pharmaceutics (Nano Tech & Targeted DDS) |
| MPH102/MPH204 | Modern Pharmaceutics/Cosmetic & Cosmeceuticals  |
| MPH103        | Pharmaceutical Regulatory Affair  |
| RPM101        | Research Process & Methodology  |
| MPA105        | Modern Pharmaceutical Analytical Techniques Practical                                     |
| MPH104        | Pharmaceutics Practical-I   |

### Semester - II

|               |   |
|---------------|---|
| MPH201/MPH101 | Molecular Pharmaceutics (Nano Tech & Targeted DDS)/ Modified Release Drug Delivery System |
| MPH202        | Advanced Biopharmaceutics & Pharmacokinetics  |
| MPH203        | Computer Aided Drug Delivery System   |
| MPH204/MPH102 | Cosmetic & Cosmeceuticals/ Modern Pharmaceutics   |
| MPH205        | Pharmaceutical Design & Development   |
| MPH206        | Pharmaceutics Practical-II  |
| MPH207        | Seminar-I (Synopsis)  |

## M.Pharm - 2<sup>nd</sup> Year

### Semester - III & IV

|        |                                       |
|--------|---------------------------------------|
| MPH301 | Seminar-II                            |
| MPH302 | Dissertation (Research Project Audit) |
| MPH401 | Dissertation (Final)                  |

## SCHOLARSHIP HOLDERS

### M.Pharm (2015 Batch)

| SL. No. | NAME         | %     | Amount |
|---------|--------------|-------|--------|
| 1       | Garima Kalra | 79.77 | 20000  |









# Master of Business Administration

BAREILLY CAMPUS

Approved by AICTE, New Delhi and Affiliated to Dr. A.P.J.A.K. Technical University, Lucknow  
(Formerly U.P. Technical University)

## Goal of the Programme

*The MBA Programme has been meticulously designed to balance theoretical knowledge with practical experience, providing MBA Students with problem solving skills applicable to their work and beneficial to the development of their professional career. The quintessence of our philosophy is promoting the habit of self learning, inculcating the feeling of teamwork, developing the ability to translate the concepts into practical applications along with strengthening and building their value system with Indian ethos. Our goal is to develop the conceptual and professional skills in our students through a teaching methodology based on lectures, case studies, seminars, group discussions, assignments, quizzes etc. Management aptitude is developed in students through management games, dissertation writing, case study, news analysis, field works, projects and interpersonal skills. Management students go for summer training where they understand the working of an organization and some of them get pre-placement offers. The team learning habits are encouraged through the management club and project teams. The involvements of students in team based learning are provided through entrepreneurial projects, economic policy study, business case and news analysis.*





## Master of Business Administration

### Specializations:

The specializations for MBA course are offered as per university curriculum in Human Resource Management, Marketing Management, Financial Management, International Business, Information Technology and Rural Development. Besides these the college also provides training to the management students for getting certification in Banking, Retail, Insurance and Risks Management, Project management, Certified Financial Planner and various modules of National Stock Exchange Certification on Financial Markets. It help them well equipped with required skills and qualifications for placement.

**DURATION :** 2 Years Full Time

### ELIGIBILITY

Three years graduation degree in BCA/BBA/B.Sc./B.Com./B.A. or 4 yrs. B.Tech./B.Pharm with minimum 55% marks from a recognised university. Preference will be given to the candidates qualified in CAT/MAT/CMAT/ATMA/SEE as per university rules.

### Admission Procedure

15% seats are filled on the basis of management quota admission procedure directly by the college as per the guidelines of affiliating university. 85% seats are allotted according to the merit of State Entrance Examination (SEE) of UP State through counseling as per the directives of AICTE, state government and affiliating university.

### FEE STRUCTURE

Fee structure is available on college website. Fee is to be paid by Demand Draft drawn in favour of "SRMSCET", payable at Bareilly.

### INTEGRITY OF THE SYSTEM

All admissions are done by maintaining transparency at every level. Admissions against management seats are done through advertisement and the list of applicants and their merit is displayed on the notice board of the college after screening.







## Master of Business Administration

### Semester - I

|         |  |
|---------|--|
| RMB 101 | Management Concepts and Applications                 |
| RMB102  | Managerial Economics                                 |
| RMB 103 | Financial Accounting for Managers                    |
| RMB 104 | Business statistics                                  |
| RMB 105 | Organizational Behavior                              |
| RMB 106 | Marketing Management                                 |
| RMB 107 | Business Communication                               |
| RMB 108 | Computer Application & Management Information System |

### Semester - II

|         |  |
|---------|--|
| RMB201  | Business Environment                           |
| RMB202  | Human Resource Management                      |
| RMB203  | Business Research Methods                      |
| RMB204  | Financial Management                           |
| RMB205  | Management Accounting & Control                |
| RMB206  | Production Operation & Supply Chain Management |
| RMB-207 | Quantitative Techniques for Managers           |
| RMB208  | Legal Aspects for Business                     |
| RMB209  | Comprehensive Viva                             |

### Industrial Training (4-6 weeks)

#### Semester - III

|          |                                     |
|----------|-------------------------------------|
| NMBA 031 | Entrepreneurship Development        |
| NMBA 032 | International Business Management   |
| NMBA 033 | Rural Development                   |
| NMBA 034 | Project Management                  |
|          | Specialization Group -1 Elective 1* |
|          | Specialization Group -1 Elective 2* |
|          | Specialization Group -2 Elective 1* |
|          | Specialization Group -2 Elective 2* |
| NMBA 035 | Summer Training Project Report      |
| AUC001   | Human Values & Professional Ethics  |

#### Semester - IV

|          |                                     |
|----------|-------------------------------------|
| NMBA 041 | Strategic Management                |
| NMBA 042 | Insurance & Risk Management         |
| NMBA 043 | Hospitality & Tourism Management    |
| NMBA 044 | Behavioral Finance                  |
|          | Specialization Group -1 Elective 3* |
|          | Specialization Group -2 Elective 3* |

|          |                         |
|----------|-------------------------|
| NMBA 045 | Research Project Report |
| NMBA 046 | Comprehensive Viva (CV) |
| AUC002   | Cyber Security          |

#### Elective Papers

##### Specialization Group : Human Resource

|            |  |
|------------|--|
| NMBA HR 01 | Leadership & Personality Development     |
| NMBA HR 02 | Industrial Relations & Labour Enactments |
| NMBA HR 03 | Negotiation & Counseling                 |

##### Specialization Group : Marketing

|            |                                       |
|------------|---------------------------------------|
| NMBA MK 01 | Consumer Behaviour & Customer Loyalty |
| NMBA MK 02 | Integrated Marketing Communications   |
| NMBA MK 03 | Retailing & Distribution Management   |

##### Specialization Group : Financial Management

|            |  |
|------------|--|
| NMBA FM 01 | Security Analysis & Investment Management  |
| NMBA FM 02 | Mgmt. of Financial Institutions & Services |
| NMBA FM 03 | Tax Planning and Management                |

##### Specialization Group : Information Technology

|            |                              |
|------------|------------------------------|
| NMBA IT 01 | Database Management System   |
| NMBA IT 02 | System Analysis & Design     |
| NMBA IT 03 | Data Communication & Network |

##### Specialization Group : International Business

|            |   |
|------------|---|
| NMBA IB 01 | International Marketing Management      |
| NMBA IB 02 | International Logistics & Documentation |
| NMBA IB 03 | International Financial Management      |

##### Specialization Group : Rural Development :

|            |   |
|------------|---|
| NMBA RD 01 | Rural Marketing   |
| NMBA RD 02 | Micro Finance, Small Group Management, and Cooperatives |
| NMBA RD 03 | Food Technology & Processing Management                 |

Updated syllabus is available on University website

Note : Elective subjects are subject to availability of sufficient number of students and Infrastructural facilities.



## About the Department

Faculty of Management Science has been offering its prestigious management programme since 1996. MBA from this college is known for its quality and perfection and ranked one of the best among all colleges of affiliating university. It is highly recognized by industries for its practical orientations. The alumni of MBA course from this college are working at leading positions in the companies of repute. The department also conducts various value addition courses and programmes such as Campus Outreach Programme, Management Development Programmes and Faculty Development Programmes.

The department is having experienced and qualified faculty members in all functional areas of management which are instrumental in providing the best and world class knowledge to the students. Besides teaching, they are also contributing significantly for the personality development of students, teaching case preparation, publications of research papers & consultancy.

Faculty members continuously interacts with industries to get the latest issues and happenings of the business world and integrate it with the teaching learning process to prepare the students of MBA ready for the industry. It helps the students in getting the best placements. The distinctive research and course modules beyond the syllabus which are designed by the faculty members provide a competitive edge to the MBA students over others. It is parallel to the best institutions ranked very high by various surveys and continually updated to bridge the gap between academia and industry.





## Pedagogy

A scientific pedagogy for teaching and learning is followed by the college for management students. It consists a blend of teaching and training modules. The syllabus of each subject is elaborated in form of lesson plan by adding extra relevant and latest topics. During various semesters students are subjected for case based teaching and assignments. Besides these they have to participate in seminar presentation, field work and surveys, research article review, industry analysis and company profile presentations. Continuous evaluation and assessments is a mandatory part of our teaching pedagogy that helps the students to remain ready for examinations, assignments and training. Guest lectures are also organized by inviting professionals from reputed companies at senior levels.

**Leadership development:** Personality grooming and business acumen developments are considered as major parts of management education. A well designed module for personality and leadership development for complete duration of study is used for this purpose. It focuses on communication, english speaking & decision making. It helps the students to realize their potential and get a competitive edge for success in business world.

**Industrial Tour:** Visits of industrial units are the integral part of management curriculum of this institute. Students in each

semester visit various industrial manufacturing units. In second year one week industrial tour is organized for Mumbai which is considered as financial capital of India. During this tour the students have the interaction sessions at Securities and Exchange Board of India, National Stock Exchange, JN Port etc.

**Research Centers for a Comprehensive Management Education :** In order to provide a comprehensive and complete management education, various research centers have been conceptualized and functional in this department. These are as follow :

1. **Centre for Innovation and Entrepreneurship Development:** It is focusing on the activities related to the development of entrepreneurship among students and interested persons.
2. **Centre for Case Development:** This centre coordinates with industry to get the business situations for which a teaching case could be developed.
3. **Centre for the Study of Economic Policy:** The purpose of this center is to study various policies and regulatory framework and its impacts on economy and business.
4. **Centre for Management Development:** It takes initiatives to conduct various management and leadership development programs. It basically focuses on conducting customized executive training.





## Specialized labs and practical training for management students

The faculty of management science is equipped with state-of-the-art infrastructure and computer lab with internet connectivity on high speed bandwidth. Various software are available in this lab where management students can get practical experience during their study. Various training related modules which are available for management students are as follow:

**Financial Modeling :** Faculty of management science has developed a specific module with state-of-the-art infrastructure for financial modeling, research and trading. The purpose of this module is to equip the management students, especially from finance specialization with required mathematical and analytical skills to understand the market trends and innovative financial products. The students are subjected with latest updates of national and international business news and market trends. They develop financial models by using advance MS Excel tools for financial planning and investment analysis.

**Human Behaviour Dynamics :** These are simulation activities for understanding human behaviors in different situation. These activities are designed for examining personality traits and behaviour of individuals that correct feedback could be communicated to management graduates about their personality. It conducts psychometric tests and analyses the behavior of individuals under different situations of team dynamics and decision making.

**Business Simulation :** This offers students a unique opportunity for strategy formulation in a simulated business scenario. Various management games are provided and

conducted to enhance decision making capacity to MBA students in which all functional areas like marketing, finance, HR and operations may be involved. It prepares the management graduates with required strategic decision making skills so that they can reach to the top level of managerial positions during their career.

## Management Club

In order to develop a habit of team work various students clubs are functional in this department for management students. These clubs are under management club which is headed by students' office bearers as President, Vice President and Secretary. These clubs are

1. Marketing Club
2. Finance Club
3. HR Club
4. Cultural Club
5. Strategy Club
6. Values and Ethics Club
7. Entrepreneurship Club

Various events like conferences, values based seminars, interdepartmental quizzes, interdepartmental debates, cultural programme, management fest, ad fest etc. are organized by the students of management club.

## Publications

In order to create a congenial academic environment Faculty of Management Science of this college started publication of management journal and news letter to provide a platform for sharing knowledge and research. A half yearly management journal "BIZCRAFT" (ISSN: 2231-0231, RNI No: UPEGN/2007/19207) and a newsletter "Enterpriser" is published by the department. Research articles are always invited for review and publication in our management journal.





## Appreciation & Recognition of Merit

*The Trust recognizes all the meritorious students every year on the basis of their annual result of the University. For this the Trust has earmarked **Rs. TWO CRORES** to be distributed to the meritorious students of the Trust Institutions every year.*

The college has laid down the following criteria for the Scholarship :

- |  |   |  |              |
|--|---|--|--------------|
| 1. Students securing 86% or more marks in Dr. A.P.J.A.K.T.U. Examination               | Rs. Equivalent to the % of marks secured (Minimum Rs. 86,000/-) | 3. Students securing 80% or more but below 85% in Dr. A.P.J.A.K.T.U. Examination | Rs. 30,000/- |
| 2. Students securing 85% or more marks but below 86% in Dr. A.P.J.A.K.T.U. Examination | Rs. 35,000/-  | 4. Students securing 75% or more but below 80% in Dr. A.P.J.A.K.T.U. Examination | Rs.20,000/-  |

Merit must be recognized and duly honoured. This creates a healthy competition among the students, acts as a fountainhead of encouragement and becomes a shining example for others to follow. SRMS Trust has been fortunate in receiving excellent support from the Trustees and well-wishers, who have come forward and instituted various medals and other awards which are :

- Shri Ram Murti Gold Medal** for the highest scoring final year out-going MBA student of the college.
- Shri Ram Murti Silver Medal** for the second highest scoring final year out-going MBA student of the college.
- Shri Ram Murti Bronze Medal** for the third highest scoring final year out-going MBA student of the college.
- Shri Ram Murti Gold Medal** for the Best all rounder MBA student of the college of the out going batch.
- A cash prize of Rs. 21,000/-** is awarded to the student securing first position in the passing out batch subject to the condition that the student has secured more than 75% Marks.





# Master of Computer Application

BAREILLY CAMPUS

Approved by AICTE, New Delhi and Affiliated to Dr. A.P.J.A.K. Technical University, Lucknow  
(Formerly U.P. Technical University)







## Goal of the Programme

*Master of Computer Application (MCA) is a three year/two year (Lateral Entry) programme divided into five semesters of core teaching at the college level and the last semester has been dedicated for live project work to be undertaken at a firm engaged in software development, so as to enable the students to be aware of the latest state-of-the-art technology in the related/specific field of his/her interest. Our MCA Programme aims at serving the social needs of public, private, corporate, non-corporate and other sectors of Indian economy by enhancing the software development skills & technology management.*

*The college emphasizes on conceptual teaching along with orientation towards live projects involving software development so as to afford an excellent exposure to the students. Special emphasis is being laid on System Programming Projects using C and C++. Apart from core studies like, Operating System, RDBMS Concepts, Computer Networks, Computer Architecture and Compiler Construction, etc., the students are also exposed to software development using Visual C++, JAVA, .NET, Oracle 9.0, Visual Basic, Developer 2000 and the latest internet Technologies including HTML/DHTML, XML, JAVASCRIPT, VBSCRIPT, COM/DCOM etc.*



# Admission Criterion

## ADMISSION PROCEDURE

Admissions are as per the following:

### MCA – 1st Year

85% seats of total intake are allotted according to the merit list of UPSEE as per state government directives through UPTU counseling.

15% & vacant/lapsed seats are allocated on the basis of merit of marks at graduation level / rank in UPSEE.

### DURATION

3 Years / 2 Years Full Time

## MCA – IIInd Year (Lateral Entry)

Candidates who have passed their Recognized Bachelor's Degree of minimum 3 years duration in BCA, B. Sc (IT/Computer Science) with Mathematics as a subject at 10+2 level or at Graduate Level are eligible for admission to Second Year. Applicant must have appeared in UPSEE.

## FEE STRUCTURE

Fee structure is available on college website. Fee is to be paid by Demand Draft drawn in favour of "SRMSCET", payable at Bareilly.

## INTEGRITY OF THE SYSTEM

All admissions are done maintaining transparency at every level.

The admission against management quota is done through advertisement and the list of applicants and their merit is displayed on Notice Board in the college after the screening. Fee charged for both categories of seats is as per U.P. Govt. directives.

## ELIGIBILITY

### 1<sup>st</sup> year admissions :

Graduation degree with 55% marks or Postgraduate in any subject from a recognised university with Mathematics as a subject at 10+2 level.

### 2<sup>nd</sup> year admissions :

55% in BCA/B.Sc. (CS)/B.Sc. (IT) with Mathematics as a subject at 10+2 level.







## Master of Computer Application

### Semester - I

|        |  |
|--------|--|
| RCA105 | Professional Communication                     |
| RCA101 | Computer Concepts & Principals of Programming  |
| RCA102 | Accounting & Financial Management              |
| RCA103 | Discrete Mathematics                           |
| RCA104 | Computer Organization & Architecture Practical |
| RCA151 | Professional Communication Lab                 |
| RCA152 | Programming Lab                                |

### Semester - II

|        |   |
|--------|---|
| RCA201 | Computer Based Numerical & Statistical Techniques     |
| RCA202 | Data Structures                                       |
| RCA203 | Introduction to Automata Theory & Languages           |
| RCA204 | Innovation & Entrepreneurship                         |
| RHU001 | Human Values & Professional Ethics                    |
| RCA251 | Computer Based Numerical & Statistical Techniques Lab |
| RCA252 | Data Structure Lab                                    |

### Semester - III

|         |  |
|---------|--|
| NMCA311 | Operating Systems                      |
| NMCA312 | Design & Analysis of Algorithms        |
| NMCA313 | Database Management System             |
| NMCA314 | Internet & Java Programming            |
| NMCA315 | Computer Based Optimization Techniques |
| AUC001/ | Human Values & Professional Ethics /   |
| AUC002  | Cyber Security                         |
| NMCA351 | DBMS Lab                               |
| NMCA352 | Java Programming Lab                   |
| NGP301  | General Proficiency                    |

### Semester - IV

|         |                                |
|---------|--------------------------------|
| NMCA411 | Management Information Systems |
| NMCA412 | Web Technology                 |

### Elective - I

|         |                                    |
|---------|------------------------------------|
| NMCA413 | Artificial Intelligence            |
| NMCA414 | Mobile Computing                   |
| AUC002/ | Cyber Security /                   |
| AUC001  | Human Values & Professional Ethics |
| MCA451  | Web Technology Lab                 |
| NMCA452 | Mini Project                       |
| NGP401  | General Proficiency                |

### Elective - I

|         |                               |
|---------|-------------------------------|
| NMCAE11 | Compiler Design               |
| NMCAE12 | Client Server Computing       |
| NMCAE13 | Data Warehousing & Mining     |
| NMCAE14 | Advance Computer Architecture |
| NMCAE15 | Distributed system            |

### Semester - V

|          |                         |
|----------|-------------------------|
| NMCA511/ | Computer Network /      |
| NMCA 513 | Dot Net Framework & C#* |

### Elective - II

|          |                      |
|----------|----------------------|
| NMCA-512 | Software Engineering |
|----------|----------------------|

### Elective-III

### Elective-IV

|           |                                       |
|-----------|---------------------------------------|
| NMCA-551/ | Computer Network Lab/                 |
| NMCA-553  | Dot Net Framework & C# Lab*           |
| NMCA552   | Project Based On Software Engineering |
| NGP-501   | General Proficiency                   |

### Elective - II

|           |                                 |
|-----------|---------------------------------|
| NMCAE 21  | Network Security & Cryptography |
| NMCAE 22  | Neural Network                  |
| NMCAE 23  | Pattern Recognition             |
| NMCAE 24  | Cloud Computing                 |
| NMCAE25*  | Computer Network                |
| NMCAE 26* | Dot Net Framework & C#          |

### Elective - III

|          |                             |
|----------|-----------------------------|
| NMCAE 31 | Image Processing            |
| NMCAE 32 | Simulation & Modeling       |
| NMCAE 33 | Software Project Management |
| NMCAE 34 | Real Time Systems           |

### Elective - IV

|          |                                      |
|----------|--------------------------------------|
| NMCAE 41 | Advanced Database Management Systems |
| NMCAE 42 | Information Storage & Management     |
| NMCAE 43 | Software Testing                     |
| NMCAE 44 | Big Data                             |

### Semester - VI

|          |            |
|----------|------------|
| NMCA-611 | Colloquium |
| NMCA-612 | Project    |

Note : Elective subjects are subject to availability of Infrastructural facilities.

The college provides students with state-of-the-art infrastructure. The computer labs have the latest configurations and are supported by equally high quality softwares. There are four labs in the Department of MCA :

### LAB -A

#### Computer Systems -30 No.

Intel Core i3 3.30GHz, 500 GB HDD, 4 GB RAM, 17" TFT Monitor.

#### Software

Microsoft Visual Studio Dot Net 2005, MS Office 2007, MS SQL Server 2000 & 2005, MS Visual Studio 6.0, Oracle 9i, JAVA, C, C++, Adobe Photoshop 7.0, Macromedia (Max Studio),

Adobe Reader 7.0, Orell Language Software, Microsoft Internet Explorer 6.0, Crystal Report Tools, MS Windows XP, Symantec, Web Logic, Tomcat, Rational Rose, Mozilla Firefox, Google Chrome

### LAB -B

#### Computer Systems -30 No.

Intel Core i3 3.30GHz, 500 GB HDD, 4 GB RAM, 17" TFT Monitor.



Oracle 9i, MS Visual Studio 6.0, SQL Server 2000, C, C++, JAVA, Microsoft Visual Studio 2005, Adobe Reader 7.0, Symantec Endpoint Security, MS Windows XP.

## LAB - C

It is a Hardware Lab used for value addition. It consists of various components of Computer System and peripherals devices and help the students to know how about the intricacies of a computer setup.

## LAB - D

### Computer System -30

Core 2-Duo, 2.94 Ghz, 2 GB RAM, 250 GB HDD, TFT Monitor

### Software

Microsoft Internet Explorer 6.0, Microsoft Office 2007, Oracle 9i, MS Visual Studio 6.0, SQL Server 2000, C, C++, JAVA, Microsoft Visual Studio 2005, Adobe Reader 7.0, Symantec Endpoint Security, MS Windows XP.

## Appreciation & Recognition of Merit

*The Trust recognizes all the meritorious students every year on the basis of their annual result of the University. For this the Trust has earmarked **Rs. TWO CRORES** to be distributed to the meritorious students of the Trust Institutions every year.*

The college has laid down the following criteria for the Scholarship :

- |  |   |
|--|---|
| 1. Students securing 86% or more marks in Dr. A.P.J.A.K.T.U. Examination               | Rs. Equivalent to the % of marks secured (Minimum Rs. 86,000/-) |
| 2. Students securing 85% or more marks but below 86% in Dr. A.P.J.A.K.T.U. Examination | Rs. 35,000/-  |
| 3. Students securing 80% or more but below 85% in Dr. A.P.J.A.K.T.U. Examination       | Rs. 30,000/-  |
| 4. Students securing 75% or more but below 80% in Dr. A.P.J.A.K.T.U. Examination       | Rs. 20,000/-  |

### Recent Scholarship Awarded



**Anuradha**  
**82.50%**

**₹ 30,000/-**



**Anuradha**  
**78.25%**

**₹ 20,000/-**

Merit must be recognized and duly honoured. This creates a healthy competition among the students, acts as a fountainhead of encouragement and becomes a shining example for others to follow. SRMS Trust has been fortunate in receiving excellent support from the Trustees and well-wishers, who have come forward and instituted various medals and other awards to encourage our students.

The medals, awards and cash prize instituted are as follows:

- Shri Ram Murti Gold Medal** for highest scoring final year out-going student of MCA course of the college.
- Shri Ram Murti Silver Medal** for the second highest scoring final year out-going MCA student of the college.
- Shri Ram Murti Bronze Medal** for the third highest scoring final year out-going MCA student of the college.
- Shri Ram Murti Gold Medal** for the Best all rounder MCA student of the college of the out going batch.
- A cash prize of Rs. 21,000/-** is awarded to the student securing first position in the passing out batch subject to the condition that the student has secured more than 75% Marks.





## Soft Computing

① Multi.Sol

Set Theory  
Network  
Algorithm.

Theory and fuzzy

*Our college is overwhelmingly rich with qualified faculty who are young experts in their respective fields, well-supported by experienced and outstanding teachers of repute. Our faculty is driven by the philosophy of knowing as which resources are to be blended and in what proportion to mould each students' individual capacities to the optimum level. We are fully aware that high quality teaching plays a key role in inculcating a stance towards life-long learning. We impress upon the faculty members to be a friend, philosopher, guide, counsellor and consultant of the students, besides the student-teacher classroom relationship. Moreover, they have been motivated to act as facilitators rather as disseminators and as such, they always upgrade their knowledge by learning through Seminars, Workshops, QIP programmes and research activities.*



# Faculty

## COMPUTER SCIENCE ENGG. & INFORMATION TECHNOLOGY

Prof. Prabhakar Gupta, PhD, M. Tech  
Mr. Laxmi Shankar Maurya, PhD (P), M. Tech  
Mr. Akhilesh Pratap Singh, M. Tech  
Mr. Alok Singh Sengar, PhD (P), M. Tech, M.Phil  
Mr. Amit Karmakar, M. Tech  
Mr. Ankit Kumar, M. Tech (P)  
Mr. Shahjahan Ali, PhD (P), M. Tech  
Mr. Saurabh Agarwal, PhD (P), M.Tech  
Ms. Sakshi Gupta, PhD (P), M. Tech  
Mr. Abhishek Dixit, ME  
Mr. Anurag Singh Yadav, M. Tech  
Mr. Diwakar Upadhyay, M. Tech  
Ms. Ratna Awasthi, M. Tech  
Mr. Manoj Kumar, M. Tech  
Mr. Vineet Kumar Chauhan, MS (ENGG)  
Mr. Mukesh Azad, M. Tech  
Mr. Rohit Johri, M. Tech  
Ms. Sangeeta Lalwani, M. Tech  
Ms. Kirti Shukla, M. Tech  
Mr. Shailesh Saxena, PhD (P), M. Tech  
Ms. Suman Lata Joshi, M. Tech  
Mr. Jitendra Singh, M. Tech  
Mr. Ankur Kumar, M. Tech  
Mr. Bishwajeet, M. Tech  
Ms. Meenakshi Pathak, M. Tech  
Ms. Shikha Arya, M. Tech

Ms. Arti Mishra, M. Tech  
Ms. Niharika Srivastava, M. Tech  
Mr. Gaurav Jaiswal, M. Tech  
Ms. Chaitali Bhowmik, M. Tech  
Mr. Ashish Agarwal, M. Tech  
Mr. Vivek Kumar, B.E.  
Mr. Sayantan Nath, PhD (P)  
Mr. Devbrat Khare, M.Tech  
Mr. Tarun Agarwal, M.Tech  
Ms. Pratibha Yadav, M.Tech  
Mr. Vikash Srivastava, PhD (P)  
Ms. Anubha Dhaka, M.Tech  
Ms. Akanksha Singh, M.Tech  
Ms. Anshika Agarwal, M.Tech  
Ms. Rifa Nazim Khan, M.Tech  
Ms. Kiran Lata Gangwar, M.Tech  
Mr. Nilesh Chandra, M.Tech

## ELECTRONICS & COMM. ENGG.

Dr. R.C. Soni, PhD (P), M. Tech  
Mr. Bimal Raj Dutta, PhD (P), M. Tech  
Ms. Nazia Parveen, PhD (P), M. Tech  
Ms. Sahreen Hijab, M. Tech  
Mr. Aman Agarwal, M. Tech  
Mr. Anuj Agarwal, M. Tech  
Mr. Ankit Khandelwal, M. Tech  
Mr. Brijesh Kumar Yadav, PhD (P), M. Tech  
Mr. Deepak Kumar, M. Tech  
Mr. Deepak Yadav, M. Tech







Mr. Kapil Bhushan, M. Tech  
Mr. Mahendra Singh, M. Tech  
Ms. Namrata Gupta, M. Tech  
Mr. Nishant Sharan, M. Tech  
Mr. Sovan Mohanty, ME, PGDBA  
Ms. Priya Singh, M. Tech, PGDIA  
Mr. Devendra Kumar, M. Tech  
Mr. Surendra Kumar, M. Tech  
Ms. Preeti Verma, M. Tech  
Ms. Shiva Jaiswal, M. Tech  
Mr. Sumit Gupta, M. Tech  
Ms. Prateek Goyal, M. Tech  
Mr. Aamod Kr. Pandey, M. Tech  
Mr. Ravi Prakash, M. Tech  
Mr. Kartik Goyal, M. Tech  
Mr. Atul Ranjan Srivastava, M. Tech  
Ms. Ankita Gupta, M.Tech  
Mr. Vivek Yadav, M.Tech  
Mr. Amit Kumar Dwivedi, M.Tech  
Ms. Rachna Arya, M.Tech  
Ms. Jhalak Gupta, M.Tech  
Mr. Prateek Bhadauria, M.Tech  
Ms. Shiwani Singh, M.Tech  
Ms. Maleeha Khan, M.Tech  
Ms. Sonali Gupta, M.Tech  
Ms. Sonam Rathor, M.Tech  
Ms. Pratistha Agnihotri, M.Tech

### ELECTRICAL & ELECTRONICS ENGG.

Dr. Piush Kumar, PhD, M. Tech  
Mr. Mohd. Mustaqeem, M. Tech  
Dr. Sachin Singh, PhD  
Mr. Santosh Khare, M. Tech  
Mr. Ashish Gangwar, M. Tech  
Ms. Anjali, M. Tech  
Mr. Rajesh Kumar, M. Tech  
Mr. Sanjeev Kumar, PhD (P), M.Tech  
Ms. Smita Dinkar, M. Tech  
Mr. Sumit Kumar Sharma, M.Tech (P)  
Mr. Sumit Patel, M. Tech  
Mr. Vinit Sharma, M. Tech  
Ms. Sony Verma, PhD (P), M.Tech  
Ms. Vidushi Gupta, M. Tech  
Mr. Mohd Azhar, M. Tech  
Mr. Mohit Pant, M. Tech  
Mr. Mukesh Kr. Singh, M. Tech  
Mr. Prafull Chauhan, M. Tech  
Ms. Sonali Kalkar, M. Tech (P)  
Mr. Suman Pramanik, M.Tech  
Ms. Sadaf Qasim, M.Tech  
Mr. Tej Prakash Verma, M.Tech  
Mr. Kamal Singh, M.Tech





# Faculty

## MECHANICAL ENGINEERING

Prof. Subhash Mehra, ME  
Dr. A. K. Bajpai, Ph.D  
Mr. Shailendra Deva, PhD (P), M. Tech  
Mr. Amit Dixit, ME  
Mr. Gaurang Deep, M. Tech  
Mr. Anupam Kundu, M. Tech  
Mr. Dhiraj Bajpai, M. Tech  
Ms. Himanshu Khulve, M. Tech  
Mr. Vijay Sharma, PhD (P), M. Tech  
Mr. Ashwani Kumar, M. Tech  
Ms. Swapna Singh, M. Tech  
Mr. Ankit Kulshrestha, M. Tech  
Mr. Saurabh Srivastava, M. Tech  
Mr. Awanish Kr. Mishra, M. Tech  
Mr. Saurabh Kumar Singh, M. Tech  
Ms. Surbhi Jain, M.Tech  
Mr. Ashish Kumar, M.Tech

## BASIC SCIENCE

Dr. Ritu Singh, PhD  
Dr. Anju Khandelwal, PhD, M.Sc  
Dr. Kamendra Kumar, PhD, M.Sc  
Dr. Krishna Kumar Tiwari, PhD  
Dr. Suneet Saxena, PhD, M.Sc.  
Mr. Amit Kumar Srivastava, PhD (P), MBA, M.Phil  
Dr. Ashutosh Pandey, PhD, DRE  
Dr. Rajeev Kumar Singh, PhD, M.Sc.  
Dr. Sanjeev Kumar Shrivastava, PhD  
Dr. Mani Agarwal, PhD, M.Sc.  
Ms. Aarti Tiwari, PhD (P), M. Sc.  
Ms. Ruchi Sah, MBA  
Mr. K.K. Agarwal, M.Tech  
Mr. Vikas Dev Singh, B. Tech  
Dr. Manish Nath Tripathi, PhD, M. Sc.  
Mr. Sumit Saxena, MBA  
Dr. Sanjay Kumar, PhD, M.Sc.  
Ms. Suchitra Agarwal, B.E.  
Ms. Sulekha Verma, M. Phill  
Dr. Jaya Sharma, PhD, MA  
Dr. Shobha Rani Katiyar, PhD, MBA, MA  
Dr. Sanjeev Gupta, PhD, M.Sc.  
Dr. Preeti Kulshrestha, PhD, M.Sc.  
Dr. Smita Saxena, PhD, M.Sc.







## PHARMACY

Dr. Lalit Singh, PhD, M. Pharm  
 Mr. Semimul Akhtar, PhD (P), M. Pharm  
 Mr. Shaileendra Kumar Verma, PhD (P), M. Pharm  
 Mr. Vijay Sharma, PhD (P), M. Pharm  
 Mr. Pranit Saraswat, PhD (P), M. Pharm  
 Ms. Shashi Verma, PhD (P), M. Pharm  
 Ms. Nita Yadav, PhD (P), M. Pharm  
 Ms. Pragati Khare, PhD (P), M. Pharm  
 Ms. Devika Tripathi, PhD (P), M. Pharm  
 Ms. Priyanka Bhatt, M.Pharm  
 Mr. Ritesh Kumar Tiwari, M.Pharm  
 Mr. Raghav Mishra, PhD (P), M. Pharm  
 Mr. Bharat Gupta, M. Pharm  
 Ms. Isha Mishra, M. Pharm  
 Ms. Ekta Kandpal, M.Pharm  
 Ms. Divya, M. Pharm

## MASTER OF COMPUTER APPLICATION

Mr. Anuj Kumar, PhD (P), M. Tech, M.Sc., PGDM  
 Mr. Arvind Mishra, M. Tech, MCA  
 Mr. Chandrahass Shankhdhar, MCA  
 Mr. Rajesh Ranjan, MCA

## MASTER OF BUSINESS ADMINISTRATION

Dr. Anant Kumar Shrivastava, PhD, M. Tech, M.Sc., PGDITM  
 Mrs. Richa Murti, MBA  
 Dr. Mamta Gaur, PhD, MBA  
 Dr. Deepesh Tiwari, PhD, MBA  
 Dr. Ankita Tandon, PhD, MBA, MA  
 Mr. Abhishek Gupta, PhD (P), MBA, M.Sc.  
 Mr. Anubhav Saxena, MBA, B.Tech  
 Mr. Sushil Kumar Gupta, PhD (P), MBA,  
 Mr. S K Suman, PhD (P), MBA, B.Tech  
 Dr. Satish Chandra Pant, PhD, MBA  
 Ms. Priyanka Khandelwal, PhD (P), MBA, M.Com  
 Ms. Ankita Srivastava, PhD (P), MBA  
 Ms. Shruti Gupta, MBA





## Teaching & Learning Process

The College has achieved academic excellence by developing a work culture where faculty and students work together to evolve teaching learning processes.

- The College has also created healthy linkages for the upliftment of the community (under privileged) in its neighbourhood to fulfill its social obligation.
- The College emphasizes on Learnability, Trainability, Capacity to unlearn and relearn. Generalized understanding and problem solving skills.

The courses are covered using following Methodology:

- Lectures & Tutorials
- Laboratory Experiments
- Assignments & Paper Presentation
- Group discussions & Seminars
- Team Room
- Case Study Analysis
- Invited Lectures
- Minor projects and major projects.
- Online Quiz
- Smart Classes

Extensive use of Audio-Visual Techniques like OHP, LCD Projectors & CDs.



## Innovative Practices

- Various Multimedia aids viz. OHPs, LCD Projectors for Power Point Presentations, Audio-Visual CDs etc. are used to improve the Teaching Learning Process.
- Industrial tours, Seminars and Expert Lectures are organized to enhance the practical/field knowledge of the students.
- Language lab has been established in the Institute to improve the communication skills of the students.
- Computers are provided in the boys & girls hostels with internet facility.
- Mock Interviews, Aptitude and Reasoning Tests are arranged.
- The college has introduced ERP solutions to integrate various functions. The ERP page can be accessed from college website by students as well as faculty members. Faculty members use the facility for recording attendance of the students, uploading their lecture plans, assignments, inter college mail etc. Students can also make use of the system through their logins and have ready access to the above information.

## Academic Planning & Monitoring

- The students are provided with Academic Hand Books subject wise giving the Lectures required and References to be studied.
- The student's performance is monitored regularly by conducting scheduled Sessional / class tests.
- The answer scripts are evaluated within a week and the students are shown their answer sheets.
- In selective cases Parents are informed.
- Additional classes / Tests are arranged as remedial measures for the needy students.
- Attendance is regularly monitored and students are informed through Notice Board and ERP.
- The extent of course covered is monitored regularly.





## Beyond the Curriculum :

- Value addition courses are organized to bridge the gap between the traditional syllabus and technological advancements.
- New experiments and equipments are added in the labs beyond the syllabus requirement.
- Students are encouraged to work on projects based on Industrial problems & requirements.
- Soft Skills, Seminars, Mini Projects and Additional Courses are arranged.

## Examination System

- Internal & External examination system is followed as per University Guidelines.
- Three sessional tests (internal) are conducted during each semester.
- External Examinations (Theory and Practical) are held by the UPTU.
- Results are compiled and declared by the UPTU.

## Personality Development

- Personality Development Classes are arranged right from Second Semester to groom the overall personality of the students and to make them industry ready and to face interviews.
- There is an English Language lab to improve the vocabulary and conversation skills.
- Two Logical Reasoning Tests are arranged regularly for II year & III year students.
- Students are motivated to undertake R&D activities and projects from II year.
- Free Internet facility is available through Wi-Fi and LAN to the students in the college as well as in hostels.

## Counseling and Guidance Cell

- A full time counselor is available at the counseling cell. Assistance from an Expert Counselor (Outside) is also available.
- Staff and students contact the cell during college time and discuss their problems.



TATA CONSULTANCY SERVICES

## TCS Sparsh 2015

Annual Meet for Training & Placement Officers of the Top Engineering Institute of India  
3rd - 4th July, 2015 At The Leela Ambiance Hotel, Gurgaon







*Emerging trends in technical and professional education call for value addition i.e. students must acquire something more than what is provided in the curriculum. There is need to enhance their communication skills, to develop professional ethics in them and to help them learn and develop human values and concern for humanity.*





### Value Addition Programme

Emerging trends in technical and professional education call for value addition i.e. students must acquire something more than what is provided in the curriculum. The college offers numerous of value added courses which are designed to bridge the gap between the academia and industry. The students have the option to choose the courses according to their desires and inclinations. The various Value Added Courses offered by the different departments are divided into branch specific and common for all branches which are as follows.:

#### (A) Branch Specific Courses :

#### Computer Science & Engineering / Information Technology / Mca:

- Object Oriented Analysis and Design using UML with essentials of Rational Software Architect
- Mobile Application Development using Android
- Big Data Analytics using Hadoop
- Software Testing Tools
- Advance JAVA with Hibernate / STRUTS
- PHP with XAMPP / WAMP
- .NET Framework & C#

#### Electrical Engineering:

- PLC / SCADA Programming
- Circuit Simulation using PSPICE
- AUTOCAD ELECTRICAL for Panel Designing, Costing & Estimation

#### Management:

- Value addition on Data Analysis: It covers data collection techniques, data analysis tools and data analysis through the software SPSS.
- Value Addition on International Business: It covers International Trade Procedures & Documentation, Global operations and Supply Chain Management.
- Value addition on Financial Management: It covers the latest updates of financial markets, preparation and execution of National Institute of Securities Markets (NISM) modules and financial planning tools & techniques.
- Value addition on Marketing: It covers the contemporary terms and issues of marketing including latest marketing techniques.
- Value addition on Economics: It is based on studying the economic fluctuations and its impact on the progress

#### Electronics & Communication Engineering:

- FPGA Programming on Hardware Kit
- PLC / SCADA Programming
- CCNA Preparation
- MATLAB Programming
- Embedded Systems

#### Mechanical Engineering:

- Design Software
- Drafting using AUTOCAD
- PRO Engineering

#### Pharmacy:

- Basics of Diagnostic Pathology
- Screening Models on Various Pharmacological Activity.
- Granulation Technology





of the country. The module focuses on latest upheavals and policies designed to uplift and elevate economic condition of the country.

- Value addition on Human Resource Management: It covers the cultural awareness for the workforce, International HRM, Employee Engagement, Competency Mapping, Employment Law, Dealing with attitude problems in the workplace, and Working with the 5 generations.
- Value addition on Management Updates: It covers the Affiliate Marketing, Blue Ocean Strategies, Latest Performance Appraisal practices in the Industries, Understanding the business plan, Corporate Communication and its importance, Personal branding and its importance in career planning, Connected Managers-The Technology diffusion at workplace.

## **(B) Common Courses for all Branches :**

### **Employability Skills Enhancement Program (ESEP)**

Apart from the aforesaid stream specific courses, the college realizes the fact that the employability of the passing out professionals is a great challenge for the country. There is need to enhance their communication skills, to develop professional ethics in them and to help them learn and develop human values and concern for humanity. Keeping it in view, the Faculty of Management in collaboration with the Faculty of Humanities offers Employability Skills Enhancement Program (ESEP) throughout the duration of all the courses. The ESEP focuses on preparing “industry-ready professionals” by enhancing the skills of students so as to align them with the needs of the industry. The objectives of ESEP are as follows:

- To ensure proactive approach amongst the students for self-development.
- To encourage Participation of students in an active career development plans.
- “Retool” students for the market opportunities and enhance the ability to manage change, take risks, collaborate, and build partnerships and teams.
- To create leaders and encourage individual autonomy to be highly successful and creative in their assignments.

The ultimate aim of ESEP sessions is to integrate the overall approach to assist students in developing and increasing their self-awareness so that they have a better understanding of their own strengths and weaknesses.

The Program is designed for students on yearly basis divided into two semesters (Odd and Even). It starts with the basics of communication (2nd year) to Final mock Interview sessions (Final year). In each successive year level of advancement is raised sequentially so that students easily digest the concepts and then move to next level. Program is more focused on participative style of learning and is divided into the following modules:

- Kinesics
- Discussion on intrapersonal skills and Interview Techniques
- Time Management
- Corporate Etiquettes
- CV Preparation and work out session
- Phonetics
- Listening skills
- SWOT analysis
- Stress Management
- Presentation skills
- Group Discussion

The aforesaid modules have enabled the trainers to develop professionals who are highly skilled and ready to face the challenges of increased competition. These Modules are specifically designed to hone the skills, attitudes and actions that enable students to get along with their fellow colleagues and supervisors and take critical decisions. This Program provided a platform to all the students for self-disclosure and self-improvement. It aimed at evolving a model through which students and institute can partner for competitiveness to enhance the pool of highly capable talent for requirements in growing corporate sectors.

### **Quantitative Aptitude & Analytical Reasoning Enhancement Program**

With an objective to inculcate the problem solving aptitude among the students and to groom their analytical reasoning, the college offers the regular classes on Quantitative Aptitude & Reasoning. Weekly Online Tests are organized to enable them to have an assessment and know the scope for improvement.





### Training, Development & Placement

#### OUR RECRUITERS

- ALLERIN TECHNOLOGIES PVT. LIMITED
- AMAZON.COM
- ARTECH INFO SYSTEMS PVT. LTD.
- ASAHI INDIA GLASS LTD.
- BALARKA TECHNOLOGIES INDIA PVT. LTD.
- BERGER PAINTS INDIA LIMITED
- CEASEFIRE INDUSTRIES LIMITED
- CERTINATION INC
- CITY WEB INDIA
- CVENT INDIA
- DAFFODIL SOFTWARE
- ENINOV SYSTEMS PVT. LTD.
- FIRST AMERICAN (INDIA) PVT. LTD.
- GRAPECITY INDIA PVT. LTD
- HEWLETT PACKARD ENTERPRISES INDIA PVT. LTD.
- IBM
- ICICI SECURITIES LIMITED
- INDIAMART INTERMESH LTD.
- INDIAN NAVY
- INNOEYE TECHNOLOGIES
- JARO EDUCATION
- JEEVANSATHI.COM (A DIVISION OF INFOEDGE INDIA LIMITED)
- JUST DIAL
- MEDICS SUPER SPECIALTY HOSPITAL, LUCKNOW
- NEW GENERATION APPLICATIONS PVT. LTD.
- POMPEII™ TECHNOLOGIES PVT. LTD.
- RANNLAB TECHNOLOGIES PVT. LTD.
- SAKSHAY WEB TECHNOLOGIES
- SPANDANA SPOORTY FINANCIAL LIMITED
- SPECTRAFORCE TECHNOLOGIES (INDIA) PVT. LTD.
- SYNAPSEINDIA OUTSOURCING PVT. LTD.
- TALENT4ASSURE ASSESSMENT SERVICES PVT. LTD.
- TATA CAPITAL
- TCS
- TRANCIS GROUP
- UCERTIFY
- VISHAL MEGAMART
- VISTAAR FINANCIAL SERVICES PVT. LTD.
- WEBKUL SOFTWARE PVT. LTD.
- WILDNET TECHNOLOGIES, NOIDA
- WITTYBRAINS SOFTWARE TECHNOLOGIES PVT. LTD.
- XCEEDANCE

#### TRAINING, DEVELOPMENT AND PLACEMENT BLOCK

*The college is fully aware of having continuous liaison with Corporate Houses and Govt. undertakings for industrial training and for campus or off campus placement of the Engineering, Pharmacy, MCA & MBA students. Keeping this in mind, college has a separate full-fledged placement cell headed by a person of the rank of a professor. This cell is activated collectively by the students and the heads of the departments. The cell is well-equipped with independent staff, modern means of communication etc.*

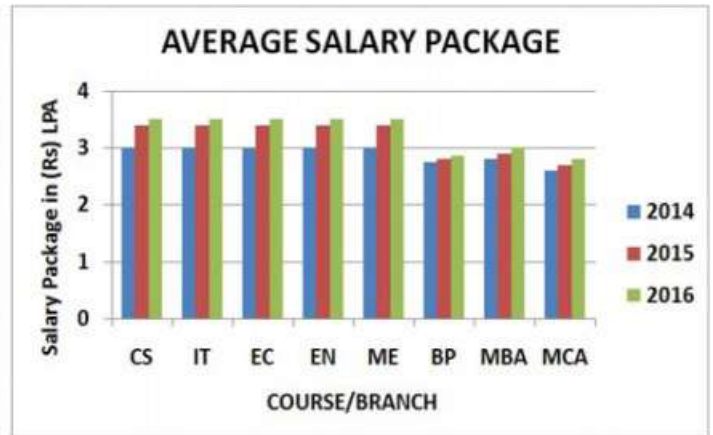
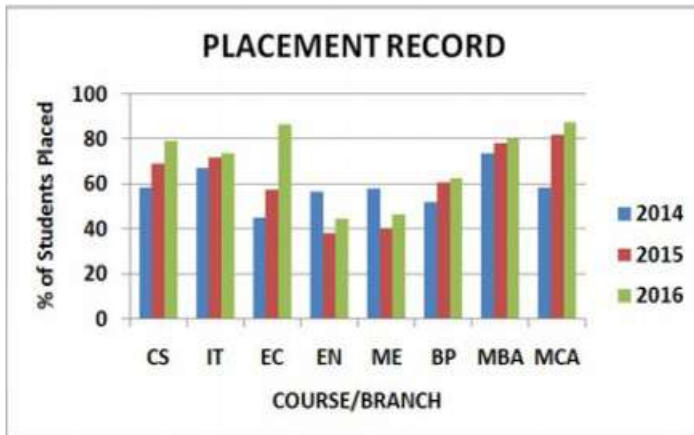
#### Placement Summary

|   |   |    |
|---|---|----|
| No. of Companies Visited/<br>Invited us (2015-16)                             | : | 88 |
| No. of Companies Visited/<br>Invited us (2016-17) as on<br>November 30 , 2016 | : | 42 |

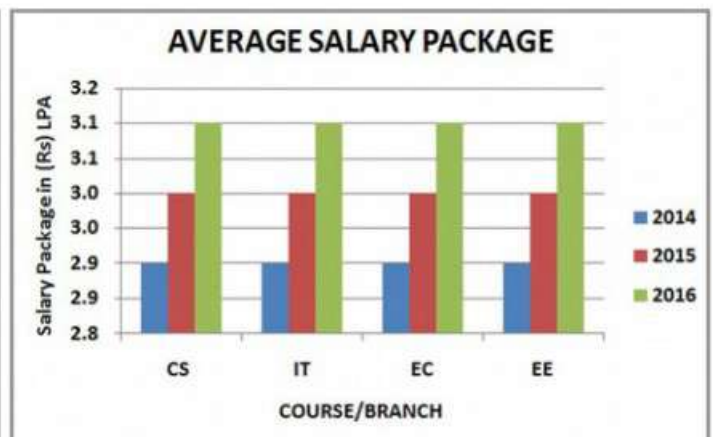
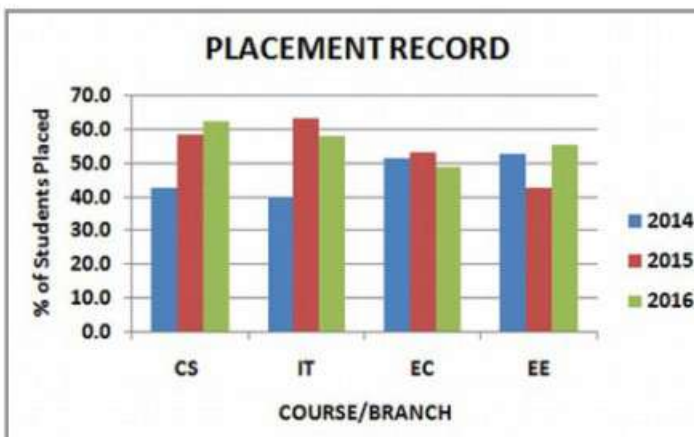


## PLACEMENT STATISTICS - LAST 3 YEARS

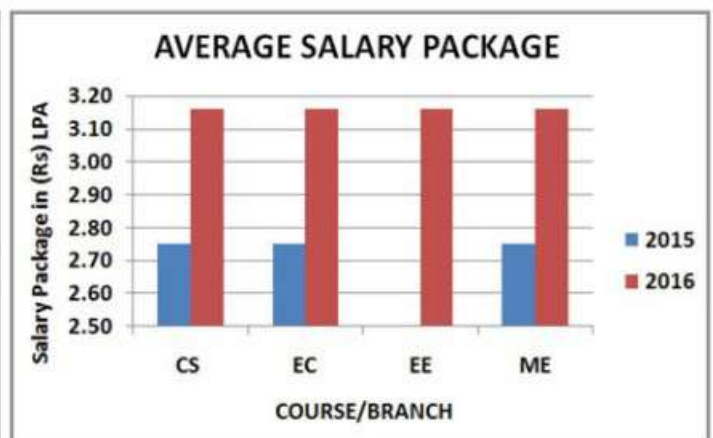
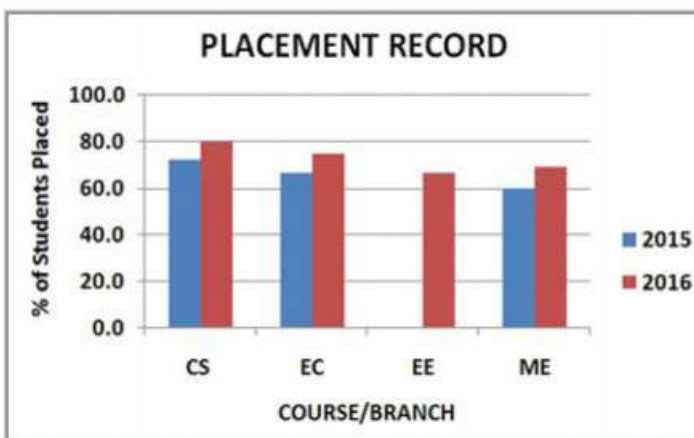
### SRMS COLLEGE OF ENGINEERING & TECHNOLOGY, BAREILLY CAMPUS



### SRMS COLLEGE OF ENGINEERING & TECHNOLOGY. & RESEARCH, BAREILLY CAMPUS



### SRMS COLLEGE OF ENGINEERING & TECHNOLOGY, LUCKNOW CAMPUS







### Functions of Training Development and Placement Cell

- 1 Industrial Training:** In order to give a hands-on experience of the corporate world, an Industrial Training after the pre-final year has been made a part of the curriculum. A proactive industry involvement programme has been established through which Industrial Training and Internship are organized for students. Students of B.Tech., B. Pharm and MBA undergo training for four weeks (after pre-final year) while students of MCA undergo industrial training for 6 months (after 5th Semester). The members of the Placement Cell arrange for personal feedback of the students from the organizations which are providing them industrial training whereby faculty representatives go and meet the trainers and enquire about students' performance personally.
- 2 Final Placement:** Training and Placement Cell arranges for final placement of students in various companies through in-campus and off-campus placement drives. The Placement Cell also offers advice and assistance to the students in securing suitable jobs at the completion of the course. The emerging trends in the global markets are monitored and the students are made aware about the latest skills and competencies in demand. The college boasts excellent placement record with most of our students getting placed in esteemed organizations.

**Eligibility for Campus Interviews requires at least 60% clear pass percentage throughout the course in External Examinations with no back paper at any stage.**

- 3 Industry - institute Interaction:** The institute is actively involved in establishing healthy interaction between academia and industry. Considering the benefits of exposure to the industry for students, the TDP Cell reaches out to corporate houses and carries out various activities throughout the academic calendar.
- 4 Industrial Visits and Guest Lectures :** Few of the very important tools of interaction between students, faculty and experts from the industry are inviting eminent professionals from corporate world to the College. Through Training and Placement Cell, the college organizes various Guest lectures, seminars and workshops where students and faculty members learn from the practical experiences of personalities from various fields of industry.

### Students Development Programme

We place a lot of emphasis on the continuous growth and development of our students. We offer regular training inputs and help them learn and acquire new skills and competence through various activities like Industrial Tours, Expert Lectures, Mock Interviews, Group Discussions, and Aptitude Tests etc.

- 1 Entrepreneurship Development Cell:** The College encourages the students to start their own enterprises after completion of the course. In this context, the college is having an Entrepreneurship Development Cell which organizes the training sessions for the students who wish to become entrepreneurs. The cell works in collaboration with the Entrepreneurship Development Institute of India, New Delhi.







- 2 **Industrial Tours** : Any technical or professional course is considered to be incomplete without exposure of the student to industry. Hence colleges arrange educational tours for the students on a regular basis. The intricacies of theory and field application are explained by the industry experts during their visits, so that the students get real life experience of theory taught to them in classrooms.
- 3 **Online Logical Reasoning Tests** : TDP Cell conducts online tests for students to prepare them for screening tests conducted by companies during campus placement. These tests are designed for students of all courses and are in alignment with the online tests conducted by companies for recruitment.
- 4 **Group Discussion** : Group Discussion and Presentation skills form an integral part of any recruitment drive conducted by companies. With an objective to prepare students for recruitment, group discussions are organized. Various topics related to their field and current awareness are given to students for discussion in groups of 6 to 8.
- 5 **Mock Interviews** : The Training and Placement Department ensures that the students are completely prepared and are confident before appearing for Recruitment Interviews. The aim of the exercise is to help students in grooming their overall personality and bringing out their hidden talents, creativity and flair of the students.
- 6 **Employability Skills Assessment Test (ESAT)** : The TDP Cell conducts the Employability Skills Assessment Test for the students to enable them to assess their own skills. The self assessment exercise helps the students to develop the skills which important to them in planning their future. These skills are frequently sought by an employer while recruiting graduates. They are not exclusively related to any single career area or degree subject. The skills assessed under this exercise include quantitative aptitude, programming skills, written communication, negotiating and persuading, verbal communication, co-operating (group work), investigating and analyzing, leadership, planning and organizing.





### Library



#### Library

Library is a vital resource and it serves as a nerve centre for all student pursuits. A rich collection of carefully selected books in all areas of Engineering, Pharmacy, Management, Computer Applications and Social Sciences, form a part of our impressive air-conditioned Library, a state-of-the-art two-storeyed building.

#### SRMS CET, Bareilly Campus

|                             |   |
|-----------------------------|---|
| Timing                      | : 08.00 am to 11.00 pm  |
| Total no. of Titles         | : 12374   |
| Total no. of Volumes        | : 48958   |
| Total no. of Print journals | : 183   |
| International Journals      | : 63  |
| National Journals           | : 120   |
| Online Journals             | : 4 online journal<br>(1. ASPP 161 Full text Jr.)<br>(2. ASME 29 Full text Jr.)<br>(3. J-Gate Social Mgmt. Sc. 4342)<br>(4. EBSCO 5200) |
| Total no. of Magazines      | : 50  |
| News Papers                 | : 13  |
| Cds of Books                | : 2117  |
| Cds. of Periodical          | : 1316  |

#### SRMSCETR, Bareilly Campus

|                        |  |
|------------------------|--|
| Timing                 | : 08.00 am to 11.00 pm   |
| Total no. of Titles    | : 2695   |
| Total no. of Volumes   | : 14113  |
| International Journals | : 48   |
| National Journals      | : 40   |
| Online Journals        | : Springer Link (149 E-Journals)<br>(Subscribed by GIST-AICTE) |
| Total no. of Magazines | : 33   |
| News Papers            | : 9  |
| CDS of Books           | : 969  |
| Cds. of Periodical     | : 348  |

#### SRMS CET, Lucknow Campus

|                                |                       |
|--------------------------------|-----------------------|
| Timing                         | : 08.00 am to 8:30 pm |
| Total no. of Titles            | : 1756                |
| Total no. of Volumes           | : 8617                |
| Total no. of Print Journals    | : 37                  |
| International Journals         | : 7                   |
| National Journals              | : 30                  |
| Online Journal (Number & Name) | : One, J-Gate         |
| Total no. of Magazines         | : 12                  |
| News Papers                    | : 7                   |
| CDS of Books                   | : 428                 |
| CDS of Periodicals             | : 134                 |

#### Other Facilities available in the Library

- ❖ Book Bank Service
- ❖ Reference Service
- ❖ Computerized Automation
- ❖ LAN with internet connectivity
- ❖ Virtual Class Room
- ❖ OPAC (Online Public Access Catalogue)
- ❖ Current Awareness Service
- ❖ Latest Arrival: a Monthly Publication
- ❖ News Paper Clipping
- ❖ Inter-Library Loan & Resource Sharing
- ❖ Reprography facility / Photocopier
- ❖ Binding & Lamination
- ❖ Gate Video Lecture



# Accessorial Infrastructure

## Virtual Class Room

The college enhances the learning experience through a comprehensive I.T. Support system. A Virtual Class Room has been established with Plasma Screen and LC projector. Students can learn by listening to as well as interacting with any Faculty/Expert from any part of the world.



## Computer Centre

Computer Centre plays a critical role of a learning centre both for the students and faculty. This state-of-the-art facility is equipped with latest IBM/HP/Xeon server with over 250 network systems i7/i5/i3 Intel Processor, 2GB/4GB RAM, Memory 500 GB/ 1 TB Hard Drive, 17"/15" color monitor. The platform is available in Computer Centre - Windows-7, Windows-XP, Unix, Linux (ubuntu) and Novell Netware using different softwares like - Oracle, Visual Studio, Photoshop, Illustrator, MATLAB, IBM Rational Rose, Director, C, C++ etc. Computer centre is equipped with facilities such as: Scanner, Line, Laser and Dot-Matrix Printers. All students are given a personal computer account, e-mail address, network drive, personal space on the Web Server and access to the Internet. Computer Centre is open round the clock.



## Health Centre

The college maintains a primary health centre where primary medical services are made available to the students in the college campus itself. For tertiary services, SRMS-IMS, an ultra modern, 950 bed, centrally air-conditioned Hospital caters to the medical needs of the students and faculty. Moreover, 24 hours first-aid and ambulance facilities are available within the campus under the supervision of a doctor and qualified assistant.

To give students peace of mind and tranquility which they need for better concentration and mental labour, the college has the required infrastructure for Yoga, Pranayam & Meditation.







### Residential Area

The Institute has on campus residential facilities for Faculty Members, Residents and Administrative Staff. The residential area is located on a sprawling and pollution free area and provides healthy condition for living. Within the residential area it has a Garden, parking space, 24 hrs. Security, Water Supply, Electricity, Cable TV and Telecom facility is available.



### Bank

The campus has an ATM Machine of Oriental Bank of Commerce which provides 24 hrs. ATM transaction facility.

Oriental Bank of Commerce (CBS Branch) is located in Ram Murti Puram, provides banking & locker facility.

### Transport

The college provides transport services regularly between campus and the city. College buses are made available to the students and faculty members for commuting from various points in the city to the college and back. All the buses reach campus before college hours and leave the campus after college hours. It is compulsory for all the students to make use of college buses or stay in hostel.





# Sport Facilities



The college provides facilities to students to pursue a wide range of sports activities in the campus. The Outdoor facilities include athletics (6 Lane 400 Meters Track field with all accessories), hockey, football and cricket fields: basketball, volleyball, lawn tennis and badminton courts. The college provides excellent indoor facilities for table tennis, badminton, billiards, chess, carom & pool etc. There is also a separate indoor squash court in the college campus.







### Gymnasium

The Campus has a well equipped modern Gymnasium in the Multipurpose Hall.

Thus, students have options to choose from a range of sporting activities and exercises to ensure that they stay healthy enough to cope with stress posed by modern day life.



### Recreational Facilities

Besides the episodic events, Cafeteria, (Nescafe KIOSKS, Cold Drink, Ice-cream point, Open air restaurant etc.) is the place where students get a lot of relaxation and enjoy their free time.



### Guest House

The college maintains Ten rooms well furnished air conditioned Guest House with ultra comfortable boarding and lodging facilities. Guest house facility is made available to visitors / parents at a very nominal rate.



### Temple

To provide spiritual environment to student, faculty & staff, all of our campus are having separate temples. Radha Mohan Temple of lord Krishna & Radha and Narmadeshwar Temple of Lord Shiva with Family are situated in Bareilly as well as in Lucknow campus. Lord Hanuman Temple is also situated at Lucknow.



## Hostel

Hostel is compulsory for all students belonging to place other than Bareilly.

Thousands of students across the country are provided residential facility available in the College Campus, which come closest to being a home away from home. The separate facilities for boys and girls, caring wardens and all alert security ensure a pleasant stay and ensuring students to focus on academics. There are four Hostels in the college campus, Revati Hostel (for girls), LBV Hostel, Er. S.M. Hostel (for boys) and Boys PG Hostel. These hostel rooms are well furnished. These hostels have separate mess which is managed by the Students Committee. Hostels have 24 hours power supply facility, hot water supply in winters, common rooms with LCD TV & indoor games. Only vegetarian food is served in the hostel mess.



## SHRI RAM MURTI CENTENNIAL AUDITORIUM

Student's activities are aimed at all round development of students, and also grooming them to face global challenges. Our endeavour is to prepare the students to inculcate managerial skills and to develop a proactive approach to solving problems, in a continuously changing economic, political and socio-cultural environment.





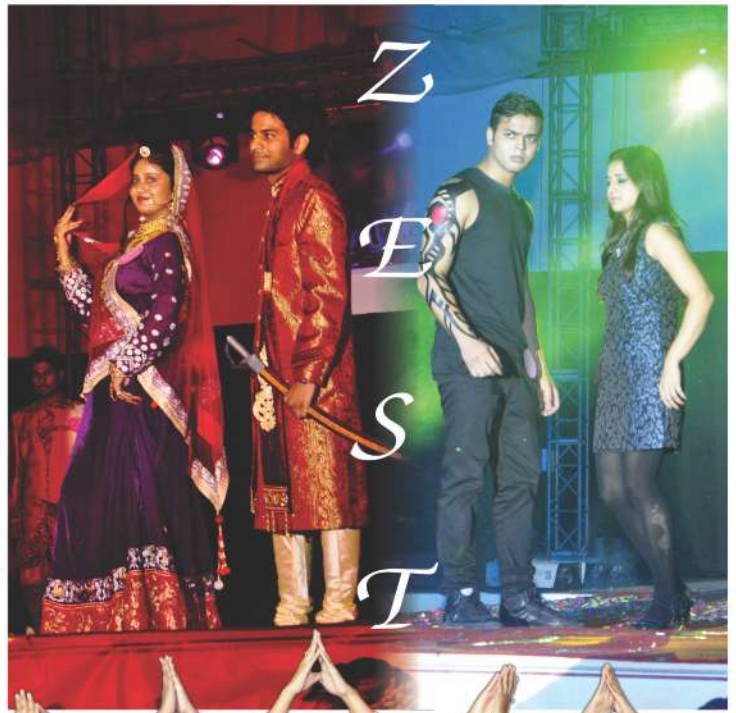
Students are encouraged to organise cultural, technical, literary events as well as to participate in sports activities. To actively involve the students in all these activities, various student clubs have been established in the college.

### TYRO Club

This is a student club of SRMSCET that has been formed by the students at college level. The club organises a number of cultural, literary, sports, dramatics, Robotics, and other activities on a regular basis through out the year.

### Zest

An annual cultural/academic festival called "ZEST" is held by the club to provide opportunities to all the students to exhibit their talents in different fields. Teams from Technical and Management colleges/institutes of repute are invited to participate in this festival. Skits, debates, quizzes, mock parliament, music & dance events followed by FASHION SHOW and STAR NITE are highlights of the event.





# Students Activities



## Aamod

The Tyro Club organises “AAMOD”, an annual sports meet, open to all Technical colleges, every year. Various events like : track and field events, various outdoor and indoor games like Badminton, Volleyball, Table Tennis, Basketball, Squash, Football, Kho-Kho, Mini Cricket etc are organised as a part of the celebrations.

## Techvyom

“TECHVYOM” is a national level technical festival, that is organised by the college annually. Various technical events are organised during this festival, in which participants from various colleges take part. A workshop on “ROBOTICS” has become a regular feature of our annual events.

## Spic Macay

SPIC-MACAY is an institution engaged in propogating classical music and dances. It attempts to familiarise the young generation of the country with their cultural roots. As such, college has made it a point to invite best performers in classical dances and instrumental/vocal music. World-fame couple artist Jai Rama Rao and Vanshree Rao (Kuchipudi Dancer), Shri Puran Chand Wadali group and Kathhak Dancer Nalini-Kamalini have given their superb performances under the banner of SPIC-MACAY.



## Hobby Club

The college also has a “HOBBY CLUB” a forum for organising creative activities among students such as painting, photography, philately, music, dramatics etc. The events organised by our college are highly appreciated and acclaimed at all levels. Most of the presentations from students are comparable to that of professionals.







### **VERVE (Vigour, Enthusiasm, Spirit, Specially in arts, writing)**

This is the college Club that has been formed at the college level by the students. This club organises many events under its banner like: Technical Events, Sports and Cultural Event (Spandan). The various clubs running under VERVE are :



### **Sports Club (Aaveg):**

The VERVE club organises Aaveg, a sports event in the college which comprises of various track and field events, outdoor and indoor games like - Badminton, Volleyball, Table Tennis, Live Chess, Carrom etc.

### **Cultural Club (Neophytes):**

This is a cultural club which provides opportunities to all the students to exhibit their talents in various creative activities such as painting, photography, music, philately, dramatics, dance, etc. The events organized by the college are highly appreciated and acclaimed at all the levels.

### **The Dramatics Club (Exprimo):**

This is the Dramatics club of the college running successfully under the aegis of VERVE club.

### **Technical Club (Techtronix - Enabling Innovation):**

This is a technical Club of the college that deals with the various technical events in all fields organised by the verve club. A Workshop on Robotics has become a regular feature.

### **Aero Club ( Skysharks):**

Skysharks acts as a forum for the students development in the field of aeronautics. This club organises several workshops as a regular feature in the college.

### **Torrent - Your Tech Pal:**

The college also offers a value added program to keep pace with the fast changing face of technology. Torrent is a student level computer based society that aims for the overall development of the students who will be the future technocrats.





# Students Activities

## SRMSCET, Lucknow

### OASIS

An oasis signifies the aesthetic personification in a heart of health filling them with fertility and prosperity. Oasis club of SRMSCET aims to contemplate the life of students with zeal, triumph and vitality building them into a Mangrove of success.

The various clubs running under OASIS are:-

#### Music & Dance club

Rhythm and beats are important for instrumental working of life. Thus to nurture the talent of students and in order to allow them to showcase their talent music & dance club is formed.

#### Dramatics & Fashionate Club

The expression plays an important role in one's persona. The dramatics club keenly organizes various dramatic events (mime, street play etc.) to maintain a proper balance of ideas in students life.

#### Sports Club

The philosophy of health is wealth has been true for ages. To keep students healthy sports events like Badminton, volleyball, table tennis, chess, carom etc. are organized.

#### Robotics Club

The Robotic club organizes activities related to Robotics amongst student fraternity. This club organizes robotics workshops of various levels.

#### Synergy Club

The taste technical appetite is given in synergy. The club organizes various printed circuit Board (PCB) making workshop, circuit making competition to improve hands-on technical knowledge amongst the students.

#### ME Club

The ME Club organizes computer aided design workshops in which activities like designing of product and new product development through various softwares like CATIA ProE.

#### IT Club

IT Club organizes Dot NET and Advanced JAVA workshops, online games in which future aspect of computer based technology has been aimed.

#### Literary Club

The Literary club provides the opportunity to all the students to exhibits their talents in various creative activities such as essay writing, theme based story writing, news editing etc.







Various Departments in the college organise club activities pertaining to their respective areas of specialization.

## Engineering :

### Robotrax Club:

The Robotrax Club is dedicated to promotion of activities related to Robotics amongst student fraternity. The club has a multi disciplinary approach and organises workshops and competitions for the benefit of the students.

### Aeronautical Club:

A new club dedicated to development of knowledge and skills in the field of Aeronautics has been established since last year. The club is receiving an overwhelming support and participation of the student community.

### Triumph Club:

Student of M.Tech. have formed a 'TRIUMPH CLUB' which conducts several activities. This Club is dedicated to development of knowledge and skills in field of research.

## (Pharmacy):

### Pharmquimica Club :

Students of Pharmacy have formed a "Pharmaquimica Club", which conducts several activities. It releases e-magazine christened "PHARMA MIRROR", which is published by the department to encourage the students of Pharmacy to increase their involvement in the field of Pharmaceutical research, publication and presentation.

## MBA

The MBA department has formed the following Clubs for the overall personality development of management students.

- |                |                           |                |                    |
|----------------|---------------------------|----------------|--------------------|
| 1. Market Buzz | - The Marketing Club      | 2. Fin Whiz    | - The Finance Club |
| 3. Man-Machine | - The Human Resource Club | 4. Technocrats | - The IT Club      |

## Paradigm

"Paradigm" is an annual event that is organized by the Faculty of Management Science with the view to provide impetus to the creativity and the initiative among students of Management. The event is made up of Extempore, Quiz, Role-play and game related to Management.

## MCA

The MCA Department organizes Club activities as part of its continuing endeavour to improve the skills of the students. Six different clubs have been formed in order to organize various activities. The clubs are:

- |                |                         |                   |
|----------------|-------------------------|-------------------|
| 1. "UWIN" Club | 2. Tweaks & Tricks Club | 3. C2C# Club      |
| 4. CISCO Club  | 5. New Era@IT Club      | 6. Blue Chip Club |

## In-House Publications

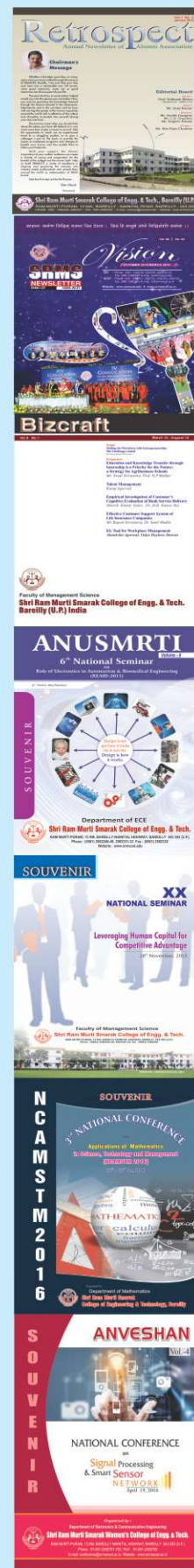
**Biz-Craft** - An academic journal which aims to encourage and propagate the academic writing in business and management knowledge.

**Vision** - Vision is a quarterly newsletter containing significant information regarding academic and extra-curricular events taking place in the college.

**Retrospect** - The publication is dedicated to college alumni and provides a platform where college alumni can express their thoughts and views.

**Spectrum** - published research papers contributed by the students.

**Endeavor** - Published research papers contributed by the faculty member.





## Membership of Academic bodies

Students are encouraged to have the memberships of various academic societies/associations like -

- Computer Society of India (CSI)
- All India Management Association (AIMA)
- The Institution of Engineers (India)
- Indian Society for Technical Education (ISTE)
- Association of Indian Management Schools (AIMS)
- Rohilkhand Management Association (RMA)

## Alumni Association

Over 8000 SRMS Brand ambassadors across the Globe are adding glory to our 20 years' success story. Their value system headed by the discipline and adaptability, inculcated during their stay at SRMS, is continuously being appraised by the corporate in the form of more and more opportunities to our students. SRMS Alumni Association, a bridge between SRMS and its alumnus, is regularly organizing Alumni Meets and Alumni Lecture Series so as to strengthen the interaction of the students with their seniors in the corporate world.



## Community Services

The students and faculty conduct regular rallies under the banner of Pharmacy Club & N.S.S. on some important National Days to disseminate knowledge and create awareness regarding the theme pertaining to that Day. The objectives of these rallies are to offer counselling to the villagers and tribal community on factors affecting their health and literacy particularly regarding:

- Women Welfare
- Knowledge of AIDS, Anaemia
- Nutrition for Girl Child
- Family Welfare
- Polio & Tuberculosis
- Hygienic Conditions



SRMSCET in collaboration with SRMS Hospital arranges rural medical camps and members of N.S.S. hold camps in tribal areas. The purpose of these camps is to spread awareness and information about diseases prevention and their cure, basic hygiene and sanitation.





### 1. Ragging is punishable offence under Law

As per the orders of Hon'ble Supreme Court, AICTE, PCI, State Government and U.P. Technical University ragging is illegal and is completely prohibited and banned both inside and outside the college campus. Any student caught or informed by victim student or his parents/guardians, an F.I.R. will be lodged against the student involved in ragging.

As per Hon'ble Supreme Court of India's Order

If any incident of ragging comes to the notice of the authority, the concerned student shall be given liberty to explain and if his/her explanation is not found satisfactory, the authority would expel him/her from the institution."

The college has taken the following steps against the menace of ragging :

- (a) A proctorial board has been constituted.
- (b) An anti-ragging cell has been set up.
- (c) A standing committee has been constituted.

Students are therefore advised to keep away from any activity amounting to any kind of Ragging.

2. Timings - College timings are from 8.00 am to 4.40 pm. Special class timing for weak students upto 5.30 pm. Students are not permitted to enter the college campus after 8.10 am and not allowed to leave the campus before 4.40 pm.
3. Transport - All day scholars have to come by college bus only. Nobody is permitted to come by own vehicles (two-wheelers, four-wheelers) private vehicles like autorickshaws, taxis and private buses.
4. Parents are advised not to give any two-wheelers or four-wheelers to their wards for coming to the college.
5. ID Card - Each student will be provided with an identification card with his/her photo and name as well as other details on it. The students have to compulsorily wear ID cards inside the campus and in college buses. Without ID cards they are not allowed to enter the campus. ID cards have to be worn by the students during visits to other colleges/universities for participating in sports, cultural and other academic activities.
6. Dress Code:  
Boys : Plain white full shirt, Black trouser, Navy blue blazer (in winters), college tie, black Oxford shoes and grey socks.  
Girls: Same as above OR white salwar with white knee length kurta with grey dupatta (white for PG Students) and navy blue blazer (in winters) black Oxford shoes and grey socks.
7. Student Counsellors - Every 60 students will have a counsellor who will be responsible for all the academic activities of the student. Counsellors would guide the students with regard to their academic problems as well as to their attendance and its record.
8. Internal Assessments - Three class-tests and Mid Sem Exam (Theory & Practical) shall be held in each and every semester as per the scheme mentioned in the calendar. In addition, assignments (only in first year) quizzes, online test, subject seminar, group discussion, general awareness etc. are also an integral part of internal assessment.
9. All requisition letters like industrial visit permission, leave letters, medical certificates permission, should be addressed to the Administrator.
10. All requisition letters regarding hostel matters including permission & leave should be addressed to Chief Warden.
11. All requisition applications for Bonafide certificates, Scholarship form should be addressed to the Principal. The Trust scholarship form should be addressed to the Managing Trustee.
12. Mobile Phone & SIM with Unique Intensification Number will be provided by the college on nominal payment with compulsory monthly recharge to the Hostellers. Mobile phones are restricted in academic Block, Library & Computer Centre.



## Important Instructions

- (a) If any student is caught owning/using any cellular phones (mobile phones) in the restricted areas, a heavy fine will be imposed and cellular phone will be seized which will not be returned in any case.
- (b) If the student is caught second time owning/using cellular phone in the restricted areas, he/she will be expelled from the Hostel/College immediately.
13. Smoking, chewing of tobacco, the use of other intoxicants and spitting are strictly prohibited inside the campus and hostel.
14. Parents are requested to keep a close watch on the attendance and progress of their wards. They are welcome to meet the Principal/Director only between 12.00 Noon to 3.00 PM.
15. If the attendance of the student is below 75%, then the student is not allowed to appear in the second mid sem. as well as end semester examination.
16. If a student has secured below 60% marks in the internal examination, then he/she shall not be allowed to appear in the end semester examination.
17. Holidays of the college are followed as per the college calendar.
18. College follows a calendar system. All information like holidays, number of working days per semester, class-tests & mid-sem exam dates, college functions, End Sem. University Exam date etc. are mentioned on that.
19. Hostel rules & other Rules of the college are to be strictly observed.
20. Hostel is mandatory for all students who are residents of any place other than Bareilly.
21. In case of withdrawal after admission no fee, including security deposit is refundable when any seat remains vacant in the course.
22. Hostel fee & fooding charges will be refundable as per Trust rules on pro rata basis.
23. Tution fee for SC/ST students whose parents annual income is below Rs. 2.00 lac is reimbursable by U.P. Govt. If reimbursement amount is not paid by the Govt. upto three months of date of admission, the students has to arrange fee from his/her own resources.

**The college reserves the right to change  
any or all of the information,  
rules, regulation and procedures without prior notice,  
whenever it is deemed necessary to do so.**

*Legal Disputes, if any, shall be subjected to Bareilly Jurisdiction only.*





## At a Glance

Neil Armstrong's words "One small step - one giant leap for mankind" came alive, with the foundation of SRMS Trust, for, since its inception in 1990, SRMS Trust has primarily taken initiative for the benefit of the society at large.

SRMS Trust, a public charitable Trust, established in the year 1990 by Shri Dev Murti, founder and chairman is a living tribute to the memory of his loving father, veteran freedom fighter, true Gandhian, ex-parliamentarian, ex-minister U.P., Late Shri Ram Murti Ji.

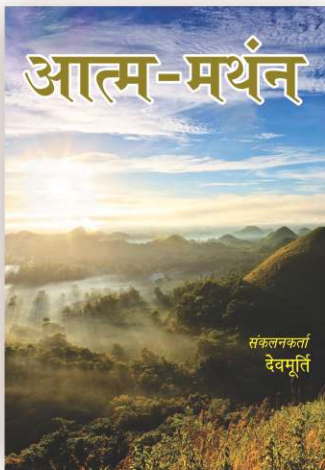
The primary objective of the Trust is to provide and promote education and research in the field of Engineering & Technology, Medicine, Humanities, Science and Management.

The aim of SRMS Trust is the upliftment of the masses:

- Promoting Social Values through Social Services.
- Promoting Technical and Professional education.
- Promoting Health & Medical Education.
- Offering a number of charitable programmes and charitable services

### Scholarship :

Late Shri Ram Murti ji was a great source of inspiration for the students particularly the meritorious but economically weak. Therefore the Trust decided to offer financial help to economically weak but meritorious students from the day of its inception. Initially such help was centred to only 10+2 and undergraduate students (1990). Later on such scholarship was extended to the students pursuing professional, technical and medical courses in institutions run by the Trust. The year 2007 was the turning point when Trust decided to distribute Scholarships of RUPEES TWO CRORE each year to meritorious students of institutions run by the Trust.



### Story Writing & Debate

Since 1990, the Trust has been organizing debates on various burning topics of National and International interest. Participation includes candidates from both degree and Intermediate levels.

To encourage new and up-coming writers the Trust organizes a National level story writing competition annually and awards substantial cash awards to its winners. Trust arranges to publish the prize winning stories in a book form. First edition "Kalyug Ki Yashodhara", Second edition "Antheen", third edition "Aatm-Manthan" have already been published and the fourth edition is under print.



## Ram Murti Pratibha Alankaran



The trust honours eminent personalities of Uttar Pradesh annually, who have made the Nation proud, with “RAM MURTI PRATIBHA ALANKARAN”. Some of the people honoured so far are Prof. M.S. Sode (Vice Chancellor, Lucknow University), Dr. J.C.Bass (Eye Surgeon, Bareilly), Prof. Wasim Barelvi (Urdu Poet), Dr. Nawal Kishore (Gynaecologist), Dr. Braham Prakash (Neuro Surgeon), Shri K.P.Saxena (Poet), Prof. Rajveer Singh Yadav (Nephrologist Surgeon), Shri Ashok Kumar Goyal (Businessman), Shri Ashok Kumar Agarwal (Journalist), Prof. S.S. Agarwal (Director, Sanjay Gandhi Post Graduate Medical Institute, Lucknow), Dr. B.K. Goel (Heart Specialist), Shri Bhuwan Chandra Harbola (Cricketer), Guru Jitendra Maharaj Ji (Kathak Dancer), Justice P.K. Jain, Krantikari, Shri Ram Murti (Pilibhit) (Freedom

Fighter), Shri Sunder Lal Bahuguna (Environmentalist), Dr. V.K. Jain (Nuclear Scientist), Shri Sudhanshu Ji Maharaj (Preacher & Social Reformer), Col. Suresh Joshi (Eminent Army Personnel), Ms. Priyanka Chopra (Miss World), Dr. Nalini (Kathak Dancer), Dr. Kamalini (Kathak Dancer), etc.

## Vocational Training

The Trust through its nexus with Engineering and Medical College has started an on-going programme from the year 2007, the Vocational Training to socially and economically backward people of the adjoining areas. 250 young persons educated up to High School or 10+2 are being selected for training in certain crafts like Carpentry, Welding, Turning, Wiring, EPBAX-Operation, X-ray Technicians, ECG Technicians and Computer Literacy.



## Free Medical Services



The Trust organises three rural medical camps every month in which it provides free medical consultancy, diagnostic services and medicines to the poor and needy people. Eye Camps are organised monthly, in which, 3068 Cataract Surgeries are performed and medical facilities are provided free of cost. Smile Train Project, USA : Under this project the patients suffering with Cleft Lip and Palate are being treated free of cost. To promote awareness about mother and childcare, the Trust organises various camps in rural and urban areas on weekly basis in association with state government agencies.





## Other Institutions run by the Trust

### SRMS Institute of Medical Sciences



### M.B.B.S. Programme

Shri Ram Murti Smarak Institute of Medical Sciences, Bareilly offers undergraduate medical education i.e. MBBS (Bachelor of Medicine & Bachelor of Surgery) Programme with an intake of 100 students with an orientation towards internationally recognized standards of excellence. The Institute is dedicated to inculcate values and ethics in students to shoulder the responsibility of taking the country to commanding heights. The Institute is established in an area of 26 acres of land in sprawling and pollution free environment. It is located at 13.2 Km, Bareilly-Nainital Road, Bareilly. The campus offers healthy atmosphere for teaching, learning, patient care and living.

The Institute is approved by Medical Council of India (MCI), Ministry of Health and Family Welfare, Govt. of India and is affiliated to MJP Rohilkhand University, Bareilly. MBBS Programme is running successfully since 2005.

### MD / MS Programme

#### Salient Features

- g M.D. / M.S. in Pre, Para, Clinical Disciplines.
- g Started from academic session 2011 - 12.

- g Permitted by Medical Council of India.
- g Affiliated to Mahatma Jyotiba Phule Rohilkhand University, Bareilly

### The Institute offers following Post Graduate Courses (MD / MS)

| S. No. |             | Discipline         | Course |
|--------|-------------|--------------------|--------|
| 1      | <b>PRE</b>  | Anatomy            | MD     |
| 2      |             | Physiology         | MD     |
| 3      |             | Biochemistry       | MD     |
| 4      | <b>PARA</b> | Pathology          | MD     |
| 5      |             | Pharmacology       | MD     |
| 6      |             | Microbiology       | MD     |
| 7      |             | Community Medicine | MD     |
| 8      |             | Forensic Medicine  | MD     |

| S. No. |                 | Discipline         | Course |
|--------|-----------------|--------------------|--------|
| 9      | <b>CLINICAL</b> | General Medicine   | MD     |
| 10     |                 | Pediatrics         | MD     |
| 11     |                 | Pulmonary Medicine | MD     |
| 12     |                 | Psychiatry         | MD     |
| 13     |                 | Dermatology        | MD     |
| 14     |                 | General Surgery    | MS     |
| 15     |                 | Orthopaedics       | MS     |
| 16     |                 | Ophthalmology      | MS     |

|    |                   |    |
|----|-------------------|----|
| 17 | ENT               | MS |
| 18 | Obs. & Gynecology | MS |
| 19 | Radio Diagnosis   | MD |
| 20 | Anesthesia        | MD |
| 21 | Radio Therapy     | MD |



## Hospital

29<sup>th</sup> Jan, 2001, was the auspicious day on which the founder of Trust, Smt. Ram Rakhhi Devi, laid down the foundation of Ultra modern 650 bed, centrally air-conditioned, Multi Super Speciality Tertiary Care Centre having highly qualified doctors and with state-of-the-art equipments. It is spread over 26 acres of land, situated at 13.2 Km. Bareilly-Nainital road. The Hospital commenced its world class services on 4<sup>th</sup> July 2002, and it caters to the medical needs of almost 30 million people within a radius of 250 Kms (150 miles) reaching upto Nepal.

## SRMS Institute of Medical Sciences (Hospital)



## SRMS School of Nursing

Shri Ram Murti Smarak School of Nursing, Bareilly offers Diploma in General Nursing & Midwifery (GNM). The goal of the programme is to provide in depth education and sound training in the field of Nursing with emphasis on preparing nurses/health workers to meet the basic health needs of the community as well as to meet the requirements of emerging hospitals/nursing homes.

The School is established in sprawling and pollution free environment. It is located at Ram Murti Puram, 13 Km. Bareilly-Nainital Road, Bareilly ( In the campus of SRMS IMS). The School and courses are recognized by Indian Nursing Council, New Delhi, affiliated with State Medical Faculty, Uttar Pradesh and Approved by Govt. of Uttar Pradesh.







## R. R. Cancer Institute & Research Centre (a unit of SRMSIMS)

R.R. Cancer Institute and Research Centre is a leading institute in whole of Uttar Pradesh and Uttarakhand, which is providing state-of-the-art facilities in the field of cancer treatment. It is equipped with High Energy Linear Accelerator with multi-leaf collimators and HDR-Brachytherapy to treat all types of cancer from head to toe. Besides delivering 3D-Conformal RT, the institution is well equipped to administer all types of chemotherapy and provide palliative care to the terminally ill patients.



## SRMS International Business School, Lucknow -Kanpur Highway

Shri Ram Murti Smarak International Business School is a world class management school in Lucknow region started in 2011 & offer AICTE approved PGDM course. It has distinctive faculty, global curriculums and world class infrastructure.





## SRMS Institute of Paramedical Sciences

Shri Ram Murti Smarak Institute of Paramedical Sciences is approved by State Medical Faculty, Lucknow and Govt. of Uttar Pradesh and affiliated to MJP Rohilkhand University, Bareilly. SRMSIPS started in 2011 & offers diverse range of degree courses in paramedical techniques. SRMSIPS offers following courses:

- |  |    |
|--|----|
| 1. Bachelor of Science in Medical Laboratory Techniques.   | 40 |
| 2. Bachelor of Physiotherapy.                              | 40 |
| 3. Bachelor of Optometry.                                  | 40 |
| 4. Bachelor of Science in Radiological Imaging Techniques. | 40 |
| 5. Bachelor of Science in Operation Theater Techniques.    | 40 |
| 6. Bachelor of Science in CT/MRI Techniques.               | 40 |

The objectives of the institute is :

1. Producing competent paramedics who may meet the challenges in Paramedical discipline and O.T.
2. Updating the Paramedics with the advancements in Science and Technology affecting the medical departments in a hospital.
3. Making the students to recognise their ability for assuming various positions in professional organisations.
4. Developing the sense of community services and personal contribution to the society.



## Shri Ram Murti Smarak Functional Imaging & Medical Centre

Shri Ram Murti Smarak Trust has added another feather to its glory in the field of medical science by establishing 'Shri Ram Murti Smarak Functional Imaging & Medical Center in Lucknow, which is India's most advance diagnostic center in private sector at Lucknow.

This ultra modern diagnostic center is be capable of doing all kind of advance diagnostics right from Nuclear Medicine to Radiodiagnosis to Pathology. This center is equipped with very advanced PET Scan with CT Biograph 64 Flow with DE and Hot Lab, Gamma Camera with dual Detector, India's first quiet 3.0Tesla MRI with 48 Channels, Digital Mammography with Fusion Technology, Ultrasound ACUSON X700 Ultrasound, Digital X-Ray and Lab investigations like Pathology, Microbiology and Biochemistry. This is the center for all investigations under one roof.

## Shri Ram Murti Smarak School (Lucknow Round Table 136)

SRMS School is the world class school started in 2015 in association with Lucknow Round Table 136. The school is established in pollution free environment. It is located at 35 km. NH-25, Lucknow Kanpur Highway, Ashakhera, Unnao (U.P.).

The objective of this school is to inculcate quality learning among students and make them competent to achieve desired goal in this fast changing global scenario.







### About Shri Ram Murti Smarak Engineering Entrance Test (SRMS-EET)

Shri Ram Murti Smarak Engineering Entrance Test (SRMS-EET) will be conducted for admission against management quota seats of SRMS Engineering Institutions.\*

The admission against management quota seats and vacant/lapsed seats will be solely be made on the basis of the merit of SRMS-EET and choice of candidate regarding campus and branch .

Please visit [www.srms.ac.in/engineering](http://www.srms.ac.in/engineering) for details regarding important dates and list of examination centres for SRMS-EET.

\*The consortium of 3 Engineering colleges namely SRMSCET, Bareilly, SRMSCET&R, Bareilly and SRMSCET, Lucknow

### SYLLABUS for SRMS-EET

#### Section A : Physics

Measurement: Dimensional analysis and error estimation, dimensional compatibility and significant figures. Motion in one dimension: Average velocity, instantaneous velocity, one-dimensional motion with constant accelerations, freely falling bodies. Laws of Motion: Force and inertia, Newton's laws of motion, and their significance. Motion in two dimensions: Projectile motion, uniform circular motion, tangential and radial acceleration in curve-linear motion, relative motion and relative acceleration. Work, Power and Energy: Work done by constant and variable forces, kinetic and potential energy, power, Conservative and non conservative forces, conservation of energy, gravitational energy, work energy theorem, potential energy stored in a spring. Linear Momentum & collisions: Linear momentum & impulse, conservation of linear momentum for two particle system, collisions, collision in one dimension, collision in two dimension, rocket propulsion. Rotation of a rigid body about a fixed axis: Angular velocity and angular acceleration, rotational kinematics, rotational motion with constant angular acceleration relationship between angular and linear quantities, rotational energy, moment of inertia for a ring, rod, spherical shell, sphere and plane lamina, torque and angular acceleration, work and energy in rotational motion, rolling motion of a solid sphere and cylinder. Gravitation: Gravitational field, Kepler's laws and motion of planets, planetary and satellite motion, geostationary satellite. Oscillatory motion: Harmonic motion, oscillatory motion of mass attached to a spring, kinetic & potential energy, Time Period of a simple pendulum, comparing simple and harmonic motion with uniform circular motion, forced oscillations, damped oscillations and resonance. Mechanics of solids and fluids: States of matter young's modulus, bulk modulus, shear modulus of rigidity, variations of pressure with depth, Buoyant forces and Archimedes principle, Pascal's law, Bernoulli's theorem and its application, surface energy, surface tension, angle of contact, capillary rise, coefficient of viscosity, viscous force, terminal velocity, Stoke's law, stream line motion, Reynold's numbers. Heat and thermodynamics: First law of thermodynamics, specific heat of an ideal gas at constant volume and constant pressure, relation between them, thermodynamics process (reversible, irreversible, isothermal, adiabatic), second law of thermodynamics, concept of entropy and concept of absolute scale, efficiency of a Carnot engine, thermal conductivity, Newton's law of cooling, black body radiation, Wien's displacement law, Stefan's law. Wave: Wave motion, phase, amplitude and velocity of wave, newton's formula for longitudinal waves, propagation of sound waves in air, effect of temperature and pressure on velocity of sound, Laplace's correction, Principle of superposition, formation of standing waves, standing waves in strings and pipes, beats, Doppler's effect. Electrostatics: Coulomb's law, electric field and potential due to point charge, dipole and its field along the axis and perpendicular to axis, electric flux, Gauss's theorem and its applications to find the field due to infinite sheet of charge, and inside the hollow conducting sphere, capacitance, parallel plate capacitor with air and dielectric medium between the Plates, series and parallel combination of capacitors, energy of a capacitor, displacement currents. Current Electricity: Concept of free and bound electrons, drift velocity and mobility, electric current, Ohm's law, resistivity, conductivity, temperature dependency of resistance, resistance in series and parallel combination, Kirchoff's law and their application to network of resistances, principle of potentiometer, effect of temperature on resistance and its application. Magnetic Effect of Current: Magnetic field due to current, Biot-Savart's law, magnetic field due to solenoid, motion of charge in a magnetic field, force on a current carrying conductors and torque on current loop in a magnetic field, magnetic flux, forces between two parallel current carrying conductors, moving coil galvanometer and its conversion into ammeter and voltmeter.

Magnetism in Matter : The magnetization of substance due to orbital and spin motions of electrons, magnetic moment of atoms, diamagnetism, paramagnetism, ferromagnetism, earth's magnetic field and its components and their measurement. Electromagnetic induction : Induced e.m.f., Faraday's laws, Lenz's law, electromagnetic induction, self and mutual induction, B-H



curve, hysteresis loss and its importance, eddy currents. Ray Optics and optical instruments: Sources of light, luminous intensity, luminous flux, illuminance, photometry, wave nature of light, Huygen's theory for propagation of light and rectilinear propagation of light, reflection of light, total internal reflection, reflection and refraction at spherical surfaces, focal length of a combination of lenses, spherical and chromatic aberration and their removal, refraction and dispersion of light due to a prism, simple and compound microscope, reflecting and refracting telescope, magnifying power and resolving power. Wave Optics: Coherent and incoherent sources of light, interference, young's double slit experiment diffraction due to a single slit, linearly polarized light, Polaroid. Modern Physics: Photo-electric equation, matter waves, quantization, Planck's hypothesis, Bohr's model of hydrogen atom and its spectra, ionisation potential, Rydberg constant, solar spectrum and Fraunhofer lines, fluorescence and phosphorescence, X-Rays and their productions, characteristic and continuous spectra. Nuclear Instability, radioactive decay laws, Emission of  $\alpha$ ,  $\beta$ ,  $\gamma$  rays, Mass - defect, Mass Energy equivalence, Nuclear Fission Nuclear Reactors, Nuclear Fusion. Classification of conductors, Insulators and semiconductors on the basis of energy bands in solids, PN junction, PN Diode, junction Transistors, Transistor as an amplifier and Oscillator. Principles of Logic Gates ( AND, OR and NOT ) Analog Vs Digital communication, Difference between Radio and television, Signal propagation, Principle of LASER and MASER, Population Inversion, Spontaneous and stimulated Emission.

## Section B : Chemistry

Atomic Structure: Bohr's concept. Quantum numbers, Electronic configuration, molecular orbital theory for homonuclear molecules, Pauli's exclusion principle. Chemical Bonding: Electrovalency, co-valency, hybridization involving s,p and d orbitals hydrogen bonding. Redox Reactions: Oxidation number, oxidising and reducing agents, balancing of equations. Chemical Equilibrium and Kinetics: Equilibrium constant (for gaseous system only) Le Chaterlier's principle, ionic equilibrium, Ostwald's dilution law, hydrolysis, pH and buffer solution, solubility product, common-ion effect, rate constant and first order reaction. Acid - Base Concepts: Bronsted Lowry & Lewis. Electrochemistry: Electrode potential and electro-chemical series. Catalysis: Types and applications. Colloids: Types and preparation, Brownian movement, Tyndall effect, coagulation and peptization. Colligative Properties of Solution: Lowering of vapour pressure, Osmotic pressure, depression of freezing point, elevation of boiling point, determination of molecular weight. Periodic Table : Classification of elements on the basis of electronic configuration, properties of s,p and d block elements, ionization potential, electronegativity & electron affinity. Preparation and Properties of the following: Hydrogen peroxide. copper sulphate, silver nitrate, plaster of paris, borax, Mohr's salt, alums, white and red lead, microcosmic salt and bleaching powder, sodium thiosulphate. Thermochemistry : Exothermic & endothermic reactions Heat of reaction, Heat of combustion & formation, neutralisation, Hess's law. General Organic Chemistry: Shape of organic compounds, Inductive effect, mesomeric effect, electrophiles & nucleophiles, Reaction intermediates: carboniumion, carbanions & free radical, Types of organic reactions, Cannizzaro Friedel Craft, Perkin, Aldol condensation. Isomerism: Structural, Geometrical & Optical IUPAC: Nomenclature of simple organic compounds. Polymers: Addition & condensation polymers Corbohydrates: Monosaccharides. Preparation and Properties Of the Followings: Hydrocarbons, monohydric alcohols, aldehydes, ketones, monocarboxylic acids, primary amines, benzene, nitrobenzene, aniline, phenol, benzaldehyde, benzoic acid, Grignard Reagent. Solid State: Structure of simple ionic compounds, Crystal imperfections (point defects only), Born-Haber cycle Petroleum: Important industrial fractions, cracking, octane number, anti knocking compounds.

## Section C : Mathematics

Algebra: Sets relations & functions, De-Morgan's Law, Mapping Inverse relations, Equivalence relations, Peano's axioms, Definition of rationals and integers through equivalence relation, Indices and surds, Solutions of simultaneous and quadratic equations, A.P., G.P. and H.P., Special sums i.e.  $Un^2$  and  $Un^3$  ( $nUN$ ), Partial fraction, Binomial theorem for any index, exponential series, Logarithm and Logarithmic series. Determinants and their use in solving simultaneous linear equations, Matrices, Algebra of matrices, Inverse of a matrix, Use of matrix for solving equations. Probability: Definition, Dependent and independent events, Numerical problem on addition and multiplication, theorem of probability. Trigonometry: Identities, Trigonometric equations, properties of triangles, solution of triangles, heights and distances, Inverse function, Complex numbers and their properties, Cube roots of unity, De-Moivre's theorem. Co-ordinate Geometry: Pair of straight lines, Circles, General equation of second degree, parabola, ellipse and hyperbola, tracing of conics. Calculus: Limits & continuity of functions, Differentiation of function of function, tangents & normal, Simple examples of Maxima & Minima, Indeterminate forms, Integration of function by parts, by Substitution and by partial fraction, definite integral, application to volumes and surfaces of frustums of sphere, cone and cylinder. Differential equations of first order and of first degree. Vectors : Algebra of vectors, scalar and vector products of two and three vectors and their applications. Dynamics : Velocity, composition of velocity, relative velocity, acceleration, composition of accelerations, Motion under gravity, Projectiles, Laws of motion, Principles of conservation of momentum and energy, direct impact of smooth bodies. Statics: Composition of coplanar, concurrent and parallel forces moments and couples resultant of set of coplanar forces and condition of equilibrium, determination of Centroid in simple cases, Problems involving friction.

## Section D : English

Grammar, Spelling, Simple Tenses, Prepositions, Conjunctions, Determiners, Adjectives, Voices, Word Meanings, Correction of Sentences, Fill In the Blanks, Uncommon Words, Sentence Completion, Synonyms, Antonyms, Relationship Between Words And Phrases. Patterns And Correct Uses (parts Of Speech), Syntax Concord, Articles, Word Formation, One Word Substitute, Vocabulary Building, Comprehension.



श्री राममूर्ति संस्थान..... श्री राममूर्ति संस्थान.....  
श्री राममूर्ति संस्थान, नमन हो तुमको बारम्बार  
इसके कण-कण में बसता है ज्ञान और विज्ञान  
श्री राममूर्ति संस्थान.....

1. पूज्य पिता की याद को लेकर  
आपने की है इसकी रचना  
यही प्रयत्न हम सबका भी है  
आपका हो सपना साकार  
श्री राममूर्ति संस्थान.....
2. इसकी पावन भूमि में है 2.....  
हर शिक्षक भगवान 2.....  
जिसमें पढ़ते हैं सब मिलकर  
भौतिक गणित रसायन 2.....  
श्री राममूर्ति संस्थान.....
3. यहां ज्ञान के साथ-साथ है पूजा का स्थान  
जहां विराजमान है देखो  
श्री कृष्ण भगवान 2.....  
हर मानव नतमस्तक होकर करता ईश का ध्यान  
श्री राममूर्ति संस्थान.....
4. इसके आंगन में है रहकर 2.....  
मिले अभियंता नाम  
मिले प्रबंधक नाम  
ज्ञान की डोर और बढ़ाना  
यही है इसका काम  
श्री राममूर्ति संस्थान.....





## Shri Ram Murli Smarak College of Engg. & Tech.

### Bareilly Campus

Ram Murli Puram, 13 Km. Bareilly-Nainital Road,  
Bareilly - 243 202 (U.P.)  
Ph.: +91-581-2582246/49, 2582331-32  
Mobile: +91-9412761544  
Fax : +91-581-2582330

### Lucknow Campus

35 Km. on NH-25, Lucknow-Kanpur Highway,  
Pin Code - 209859 (U.P.)  
Ph.: +91-5143-278401-03  
Mobile: +91-7895984000  
Fax: 05143-278404

### Bareilly City Office

Shri Ram Murli Marg, N-3, Rampur Garden,  
Bareilly - 243 001 (U.P.)  
Ph.: +91-581-2567571, 2567724; Fax : +91-581-2567792

### Lucknow City Office

UGF, Krishna Complex, 216 Chandganj Garden Road,  
Aliganj, (Near Vivekanand Hospital) Lucknow-226 024 (U.P.)  
Ph./Fax: +91-522-4011077

## Shri Ram Murli Smarak College of Engg., Tech. & Research

### College Campus

Ram Murli Puram, 13 km., Bareilly-Nainital Road,  
Vill. Prahladpur, Bareilly-243202 (U.P.)  
Ph. : +91-581-2582701-704; Fax : +91-581-2582700  
Mobile: +91-9412761545

### City Office

Shri Ram Murli Marg,  
N-3, Rampur Garden, Bareilly- 243001 (U.P.)  
Ph. : +91-581-2567571, 2567724  
Fax : +91-581-2567792

## Admission Helpline

### SRMSCET, BAREILLY

+91-9458702000  
+91-7895982000

### SRMSCET, LUCKNOW

+91-7895984000  
+91-9458702250

### SRMSCETR, BAREILLY

+91-9458703000  
+91-7895983000

Website: [www.srms.ac.in](http://www.srms.ac.in) | Email: [admissions@srmscet.edu](mailto:admissions@srmscet.edu)